

Pooja Room Tiles

300x450mm Ceramic Tiles



About OBL

Orient Bell Limited (OBL) is amongst the largest manufacturers of Wall and Floor Tiles. Established in 1977, OBL has been a pioneer in the Industry with a focus on customer-centric innovation.

First to manufacture ultra-vitrified tiles, new product designs & development is a continuous process at OBL. As a result it has an extensive range of tiles with various finishes & textures. It has 4 patent-pending technologies: Forever Tiles, GermFree Tiles, Cool Tiles & Life Tiles.

To display extensive range of tiles, we have a chain of signature showrooms. Privileged to be associated with premier architects and construction agencies of the country, it also counts most leading developers as well as government & public sector institutions as its customers.



- The ISO 9001:2015 accreditation for our quality control management systems reflects the quest for manufacturing international standard products.
- In 2015 our Sikandarabad plant was awarded with prestigious ISI certification for its products.
- In May 2000, OBL was awarded ISO 14001 certification by the internationally recognised BSI Management Systems, UK.
- Our manufacturing units are ISO 14001:2015 certified, the most complete and global expression for an environment friendly industrial company.
- We have been awarded OHSAS 18001 Certification for Health & Safety Standards. No waste water is ever discharged from our factory.
- We were also awarded with "Certificate Of Merit" in 'National Energy Conservation Award' 2016 organised by Ministry of Power for saving Power and Fuel consumption.

INDEX

300X450mm GLOSSY

ODG CREAMA NORDIC MOTIF	02
OHG MOSAIC KALASH HL	02
OHG MOSAIC SWASTIK HL	02
OHG MOSAIC LORD GANESHA HL	02
ODG RHOMBOID CREAMA	08
OHG RHOMBOID SWASTIK OM HL	08
OHG RHOMBOID LORD GANESHA HL	08
OHG SONGKET KALASH SWASTIK HL	06
OHG SONGKET DIYA SWASTIK HL	06
OHG SONGKET SWASTIK OM HL	06
ODG SONGKET ART GOLD	06
OHG STATUARIO BRASS BELL HL	04
OHG STATUARIO SWASTIK OM HL	04
ODG STATUARIO WHITE	04



Pooja Room Tiles

300x450mm Gloss Finish



ODG CREAMA NORDIC MOTIF, OHG MOSAIC KALASH HL, OHG MOSAIC LORD GANESHA HL & OHG MOSAIC SWASTIK HL



ODG CREAMA NORDIC MOTIF



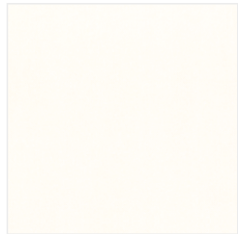
OHG MOSAIC KALASH HL



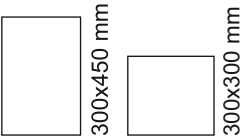
OHG MOSAIC LORD GANESHA HL



OHG MOSAIC SWASTIK HL



300X300 mm
ANTI SKID EC IVORY



Pooja Room Tiles

300x450mm Gloss Finish



OHG STATUARIO SWASTIK OM HL, OHG STATUARIO BRASS BELL HL & ODG STATUARIO WHITE



OHG STATUARIO SWASTIK OM HL



OHG STATUARIO BRASS BELL HL



ODG STATUARIO WHITE



PGVT CARARA ELEGANCE



Pooja Room Tiles

300x450mm Gloss Finish



OHG SONGKET DIYA SWASTIK HL, ODG SONGKET ART GOLD



OHG SONGKET KALASH SWASTIK HL



OHG SONGKET SWASTIK OM HL



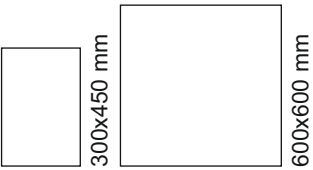
OHG SONGKET DIYA SWASTIK HL



ODG SONGKET ART GOLD



PGVT SOFITEL GOLD MARBLE



Pooja Room Tiles

300x450mm Gloss Finish



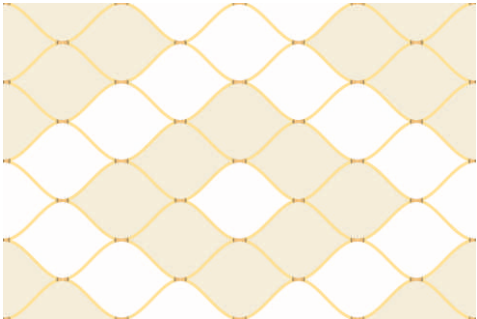
OHG RHOMBOID LORD GANESHA HL, OHG RHOMBOID SWASTIK OM HL & ODG RHOMBOID CREAMA



OHG RHOMBOID LORD GANESHA HL



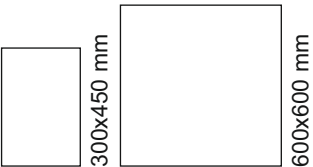
OHG RHOMBOID SWASTIK OM HL



ODG RHOMBOID CREAMA



PGVT MORACCO BEIGE



TECHNICAL SPECIFICATIONS

Digital Ceramic Tiles

Packing Details					
Size	No. of Tiles	Covered Area Per Carton		No of Box per layer	No of layer per pallet
(In mm.)	Per Carton	(In Sq. Mtr.)	(In Sq. Ft.)		
300x450 mm	6	0.81	8.716	32	3

(E > 10 % Group B III) as per IS 15622:2017				
Characteristics	Standard Test Method	IS 15622:2017 E > 10 % (Group B III)		OBL Norms
Dimension & Surface Quality		Unrectified	Rectified	
Deviation in Length & Width	IS 13630 (Part 1):2006	± 0.4%	± 0.2 %	Conforms
Deviation in Thickness		± 5.0 %		± 3.00 %
Straightness of Sides		± 0.2 %	± 0.15 %	Conforms
Rectangularity		± 0.3 %	± 0.2 %	Conforms
Surface Flatness		± 0.3 %		± 0.20 % 😊😊
Surface Quality		Min. 95 % tiles shall be free from visible defects		Min. 95 % tiles shall be free from visible defects
Physical Properties				
Water Absorption (%)	IS 13630 (Part 2):2006	Average > 10 %		15±2 % 😊
Modulus of Rupture in [N/mm ²]	IS 13630 (Part 6):2006	Min 15, for thickness < 7.5 mm Min 12, for thickness≥ 7.5 mm		>15 😊
Breaking Strength in N	IS 13630 (Part 6):2006	< 7.5 mm thickness: 200, Min ≥ 7.5 mm thickness: 600, Min		Conforms 😊
Moisture Expansion in mm/m	IS 13630 (Part 3):2006	0.04, Max		Conforms
Scratch Hardness of Surface (Moh's Scale)	IS 13630 (Part 13):2006	3, Min		>3
Resistance to Surface Abrasion of Glazed Tiles (Class I to V)	IS 13630 (Part 11):2006	Class II, Min		Conforms
Co-efficient of Linear Thermal Expansion from Ambient Temperature to 100°C	IS 13630 (Part 4):2006	9x10 ⁻⁶ K ⁻¹ , Max		Conforms
Thermal Shock Resistance	IS 13630 (Part 5):2006	10 cycles, Min		Passed 10 Cycle
Crazing Resistance Glazed Tiles	IS 13630 (Part 9):2006	4 Cycles@7.5 bar, Min		4 Cycle Passed 😊😊
Impact Resistance- Coefficient of Restitution	IS 13630 (Part 14):2006	0.55, Min		>0.55
Chemical Properties				
Resistance to Staining of Glazed Tiles	IS 13630 (Part 8):2006	Class I, Min		Conforms
Resistance to Household Chemicals		Class AA, Min		Conforms
Resistance to Acids and Alkalis (with exception of hydrofluoric acid and its compound)		Required, if agreed		Resistant

NOTE: Certain amount of Size and Shade variation is inherent in all ceramic products. Within the limits of printed material, the colors and aesthetics of the products correspond closely to those of illustrated products. Prospective customers are advised to inspect a sample of the tile before ordering and laying. At all points of time, the company liability is restricted to the purchase value of tiles.

Every effort has been made to ensure the accuracy of the information given. However, the company reserves the right to delete & change, any of the items, colors, sizes & technical specifications without any prior notice.

TECHNICAL SPECIFICATIONS

Glazed Vitrified Tiles

Packing Details					
Size	No. of Tiles	Covered Area Per Carton		No of Box per layer	No of layer per pallet
(In mm.)	Per Carton	(In Sq. Mtr.)	(In Sq. Ft.)		
600x600 mm	4	1.44	15.5	28	1

Group B Ia as per ISO 13006:2012 and Group B Ib as per IS 15622:2017					
Characteristics	Test Methods	Requirement as per ISO 13006 ≤ 0.5 Group B Ia	Requirement as per IS 15622:2017 0.08<E ≤ 3% Group B Ib		OBL Norms
Dimension & Surface Quality	IS 13630 (Part 1):2006		Unrectified	Rectified	
Deviation in Length & Width		±0.6%	± 0.4%	± 0.1 %	± 0.1 %
Deviation in Thickness		±5%	± 5.0 %		± 4 %
Straightness of Sides		±0.5%	± 0.3 %	± 0.1 %	± 0.1 %
Rectangularity		±0.5%	± 0.3 %	± 0.1 %	± 0.1 %
Surface Flatness		±0.5%	± 0.5 %		± 0.2 % 😊😊
Surface Quality		Min. 95 % tiles should be free from visible defects	Min. 95 % tiles should be free from visible defects		Conforms
Physical Properties					
Water Absorption	IS 13630 (Part 2):2006	Avg ≤ 0.5, Individual max, 0.6	Avg 0.08<E ≤ 3, Individual 3.3, Max		Avg ≤ 0.5, Individual max, 0.6
Modulus of Rupture in [N/mm ²]	IS 13630 (Part 6):2006	Minimum 35, Individual 32, Min	Avg 30, Individual 27, Min		Avg 38 Min, Individual 35, Min 😊😊
Breaking Strength in N	IS 13630 (Part 6):2006	< 7.5 mm thickness: 700, Min ≥ 7.5 mm thickness: 1300, Min	< 7.5 mm thickness: 700, Min ≥ 7.5 mm thickness: 1100, Min		1500 Min 😊😊
Moisture Expansion in mm/m	IS 13630 (Part 3):2006	Declare Value	0.02, Max		< 0.02
Scratch Hardness of Surface (Moh's Scale)	IS 13630 (Part 13):2006	NA	5, Min		5 to 8 Depending on Design/Surface
Resistance to Surface Abrasion of Glazed Tiles (Class I to V)	IS 13630 (Part 11):2006	Test Method Available	Class II, Min		Class-III to Class-V Depending as per Design / Surface 😊
Co-efficient of Linear Thermal Expansion from ambient temperature to 100°C	IS 13630 (Part 4):2006	Test Method Available	7x10 ⁻⁶ K ⁻¹ , Max		Conforms
Thermal Shock Resistance	IS 13630 (Part 5):2006	Test Method Available	10 cycles, Min		Passed
Crazing Resistance	IS 13630 (Part 9):2006	Test Method Available	4 Cycles@7.5 bar, Min		4 Cycle @ 7.5 Bar Min 😊
Frost Resistance	IS 13630 (Part 10):2006	Required	Required		Resistance
Bulk Density, in (g/cc)	IS 13630 (Part 12):2006	NA	2.0, Min		> 2.1
Impact Resistance- Coefficient of Restitution	IS 13630 (Part 14):2006	Manufacturer to State	0.55, Min		0.7-0.85
Chemical Properties					
Resistance to Staining of Glazed Tiles	IS 13630 (Part 8):2006	Min, Class 3	Class I, Min		Conforms
Resistance to Household Chemicals		Min, GA	Class AA, Min		Conforms
Resistance to Acids and Alkalis (with exception of hydrofluoric acid and its compounds)		Test Method Available	Required, if agreed		Conforms

NOTE: Certain amount of Size and Shade Variation is inherent in all ceramic products. Within the limits of printed material, the colors and aesthetics of the products correspond closely to those of illustrated products. Prospective customers are advised to inspect a sample of the tile before ordering and laying. At all points of time, the company liability is restricted to the purchase value of tiles.

Every effort has been made to ensure the accuracy of the information given. However, the company reserves the right to delete & change, any of the items, colors, sizes & technical specifications without any prior notice.

TECHNICAL SPECIFICATIONS

Digital Ceramic Floor Tiles

Packing Details					
Size	No. of Tiles Per Carton	Covered Area Per Carton		No. of Box Per Layer	No. of Layer Per Pallet
(In mm.)		(In Sq. Mtr.)	(In Sq. Ft.)		
300X300 mm	10	0.90	9.69	32	3

(3<E<6% Group B IIa) as per IS 15622:2017				
Characteristics	Standard Test Method	IS 15622:2017 3<E≤ 6% (Group B IIa)		OBL Norms
Dimension & Surface Quality	IS 13630 Part 1	Unrectified	Rectified	
Deviation in Length & Width		± 0.4 %	± 0.1 %	± 0.1 %
Deviation in Thickness		± 5.0 %		± 4.00 %
Straightness of Sides		± 0.3 %	± 0.1 %	± 0.1 %
Rectangularity		± 0.3 %	± 0.1 %	± 0.1 %
Surface Flatness		± 0.5 %		± 0.2 % 😊😊
Surface Quality		Min 95% of the tiles shall be free from visible defects that would impair the appearance of a major area of the tile		Conforms
Physical Properties				
Water Absorption (%)	IS 13630 Part 2	Average 3 < E ≤6 %, Individual 6.2% Max.		3-6% 😊
Modulus of Rupture in [N/mm ²]	IS 13630 Part 6	Average 22, individual 20, Min.		Min 30 N/mm ² 😊
Breaking Strength in N	IS 13630 Part 6	600 Min for thickness <7.5mm, 1000 Minimum for Thickness ≥7.5 mm		Min 700 N 😊
Moisture Expansion in mm/m	IS 13630 Part 3	0.03, Max		Conforms
Scratch hardness (Moh's Scale)	IS 13630 Part 13	4, Min		Min 4
Resistance to surface abrasion of glaze tiles Class I to V (Applicable for floor applications only)	IS 13630 Part 11	Class II, Min		Class II to IV (Depending on surface)
Linear thermal expansion Co-efficient	IS 13630 Part 4	9x10 ⁻⁶ max		Conforms
Thermal Shock Resistance	IS 13630 Part 5	10 cycles, Min		Passed
Crazing Resistance	IS 13630 Part 9	4 Cycles at 7.5 Bar, Min		Passed 😊😊
Impact Resistance	IS 13630 Part 14	0.55, Min		Min 0.60
Frost Resistance	IS 13630 Part 10	Required if agreed to between manufacturer and purchaser		Passed
Chemical Properties				
Resistance to staining of glazed tiles	IS 13630 Part 8	Class I, Min		Min class I
Resistance to household chemicals		Class AA, Min		Min class AA
Resistance to acid and alkalis (Except HF)		Require If Agreed		Min class AA

NOTE: Certain amount of Size and Shade variation is inherent in all ceramic products. Within the limits of printed material, the colors and aesthetics of the products correspond closely to those of illustrated products. Prospective customers are advised to inspect a sample of the tile before ordering and laying. At all points of time, the company liability is restricted to the purchase value of tiles.

Every effort has been made to ensure the accuracy of the information given. However, the company reserves the right to delete & change, any of the items, colors, sizes & technical specifications without any prior notice.

TECHNICAL SPECIFICATIONS

Glazed Vitrified Tiles

Packing Details					
Size	No. of Tiles	Covered Area Per Carton		No of Box per layer	No of layer per pallet
(In mm.)	Per Carton	(In Sq. Mtr.)	(In Sq. Ft.)		
600x600 mm	4	1.44	15.5	28	1

Group B Ia as per ISO 13006:2012 and Group B Ib as per IS 15622:2017					
Characteristics	Test Methods	Requirement as per ISO 13006 ≤ 0.5 Group B Ia	Requirement as per IS 15622:2017 0.08<E ≤ 3% Group B Ib		OBL Norms
Dimension & Surface Quality	IS 13630 (Part 1):2006		Unrectified	Rectified	
Deviation in Length & Width		±0.6%	± 0.4 %	± 0.1 %	± 0.1 %
Deviation in Thickness		±5%	± 5.0 %		± 4 %
Straightness of Sides		±0.5%	± 0.3 %	± 0.1 %	± 0.1 %
Rectangularity		±0.5%	± 0.3 %	± 0.1 %	± 0.1 %
Surface Flatness		±0.5%	± 0.5 %		± 0.2 % 😊😊
Surface Quality		Min. 95 % tiles should be free from visible defects	Min. 95 % tiles should be free from visible defects		Conforms
Physical Properties					
Water Absorption	IS 13630 (Part 2):2006	Avg ≤ 0.5, Individual max, 0.6	Avg 0.08<E ≤ 3, Individual 3.3, Max		Avg ≤ 0.5, Individual max, 0.6
Modulus of Rupture in [N/mm ²]	IS 13630 (Part 6):2006	Minimum 35, Individual 32, Min	Avg 30, Individual 27, Min		Avg 38 Min, Individual 35, Min 😊😊
Breaking Strength in N	IS 13630 (Part 6):2006	< 7.5 mm thickness: 700, Min ≥ 7.5 mm thickness: 1300, Min	< 7.5 mm thickness: 700, Min ≥ 7.5 mm thickness: 1100, Min		1500 Min 😊😊
Moisture Expansion in mm/m	IS 13630 (Part 3):2006	Declare Value	0.02, Max		< 0.02
Scratch Hardness of Surface (Moh's Scale)	IS 13630 (Part 13):2006	NA	5, Min		5 to 8 Depending on Design/Surface
Resistance to Surface Abrasion of Glazed Tiles (Class I to V)	IS 13630 (Part 11):2006	Test Method Available	Class II, Min		Class-III to Class-V Depending as per Design / Surface 😊
Co-efficient of Linear Thermal Expansion from ambient temperature to 100°C	IS 13630 (Part 4):2006	Test Method Available	7x10 ⁻³ K ⁻¹ , Max		Conforms
Thermal Shock Resistance	IS 13630 (Part 5):2006	Test Method Available	10 cycles, Min		Passed
Crazing Resistance	IS 13630 (Part 9):2006	Test Method Available	4 Cycles@7.5 bar, Min		4 Cycle @ 7.5 Bar Min 😊
Frost Resistance	IS 13630 (Part 10):2006	Required	Required		Resistance
Bulk Density, in (g/cc)	IS 13630 (Part 12):2006	NA	2.0, Min		> 2.1
Impact Resistance- Coefficient of Restitution	IS 13630 (Part 14):2006	Manufacturer to State	0.55, Min		0.7-0.85
Chemical Properties					
Resistance to Staining of Glazed Tiles	IS 13630 (Part 8):2006	Min, Class 3	Class I, Min		Conforms
Resistance to Household Chemicals		Min, GA	Class AA, Min		Conforms
Resistance to Acids and Alkalis (with exception of hydrofluoric acid and its compounds)		Test Method Available	Required, if agreed		Conforms

NOTE: Certain amount of Size and Shade Variation is inherent in all ceramic products. Within the limits of printed material, the colors and aesthetics of the products correspond closely to those of illustrated products. Prospective customers are advised to inspect a sample of the tile before ordering and laying. At all points of time, the company liability is restricted to the purchase value of tiles.

Every effort has been made to ensure the accuracy of the information given. However, the company reserves the right to delete & change, any of the items, colors, sizes & technical specifications without any prior notice.



Making Tile Selection Easier



Visualise selected tiles & get a quote



Tiles selected by you in your room



Share layout for a personalised render*

www.orientbell.com

CONTACT US

CORPORATE OFFICE:

Iris House, 16 Business Centre,
Nangal Raya, New Delhi – 110046, India
Tel: +91-11-47119100

REGISTERED OFFICE:

8 Industrial Area, Sikandrabad – 203 205 (UP), India
Tel: +91-5735-222-203 / 424, +91-8191004575 / 76

CUSTOMER CARE:

customercare@orientbell.com
Toll Free: 1800 208 1015

CIN: L14101UP1977PLC021546

Please join us on social media



www.orientbell.com

