

Sparkle

HSK WALL TILES | 300x450mm



About OBL

Orient Bell Limited (OBL) is amongst the largest manufacturers of Wall and Floor Tiles. Established in 1977, OBL has been a pioneer in the Industry with a focus on customer-centric innovation.

First to manufacture ultra-vitrified tiles, new product designs & development is a continuous process at OBL. As a result it has an extensive range of tiles with various finishes & textures. It has 4 patent-pending technologies: Forever Tiles, GermFree Tiles, Cool Tiles & Life Tiles.

To display extensive range of tiles, we have a chain of signature showrooms. Privileged to be associated with premier architects and construction agencies of the country, it also counts most leading developers as well as government & public sector institutions as its customers.



OBL Awards & Accolades

Realty+ recognizes the best of the best within the ranks of Indian Real Estate



Website of The Year 2024
for www.orientbell.com
(India's construction & design industry)



Indian Digital Marketing 2023
Best use of social media



e4m Pride of India Brands 2022
(The Best Of Bharat Conference & Awards)



Brand of The Year 2023
(Flooring Idea-Tiles & Ceramic)



Customer Retail Journey Innovation
Winners Future of Retail Summit & Awards 2020



CEO with HR Orientation
ZEE BUSINESS
National Human Capital Leadership Congress & Awards

INDEX

300x450mm | SPARKLE WALL TILES

HBG ATLANTIC STONE GREY LT	09	HBG PLAIN MOSAIC WHITE	06
HBG ATLANTIC STONE GREY DK	09	HHG MOROCCAN15 MOSAIC BLUE HL	06
HHG ATLANTIC DIAMOND ART4 HL	09	HHG MOROCCAN15 MOSAIC GREEN HL	06
		HHG MOROCCAN15 MOSAIC RED HL	06
HBG ARMANI MARBLE GREY LT	11	HBG RIOS BEIGE	18
HBG ARMANI MARBLE GREY DK	11	HBG RIOS BROWN	18
HHG ARMANI PALM LEAF HL	11		
HBG ARMANI MARBLE BROWN LT	14	HBG SAND BEIGE LT	16
HBG ARMANI MARBLE BROWN DK	14	HBG SAND BEIGE DK	16
HHG ARMANI GEOMETRIC ART HL	14	HHG STARGAZER BEIGE HL	16
HBG BOTTOCINO BEIGE LT	12	HBG SAND GREY LT	10
HBG BOTTOCINO BEIGE DK	12	HBG SAND GREY DK	10
HHG BOTTOCINO COFFEE BEANS HL	12	HHG SAND MOSAIC GREY HL	10
HHG BOTTOCINO INLAY LEAVES HL	12	HHG MORROCAN ART MULTI HL	10
HBG CLASSIC DYNA CREAMA	13	HBG STATUARIO WHITE	08
HBG CLASSIC DYNA BEIGE	13	HHG STATUARIO STRIPS WHITE HL	08
HHG DYNA FLORAL LEAVES HL	13	HHG STATUARIO CRACKLE MOSAIC HL	08
HBG CLASSIC CARRARA MARBLE	08	HBG SOAPSTONE GREY LT	11
		HBG SOAPSTONE GREY DK	11
		HHG SOAPSTONE LILY MOSAIC GREY HL	11
HBG CEMENTO GREY LT	09	HBG SEA SKY	22
HBG CEMENTO GREY DK	09	HBG SEA PEBBLES MULTI	22
HHG CEMENTO GEOMETRIC ART HL	09	HHG SEA FISH MID HL	22
		HHG SEA FISH BOTTOM HL	22
HBG EMPERADOR MARBLE BEIGE	20	HBG SHEER CHUNNI BLUE LT	21
HBG EMPERADOR MARBLE BROWN	20	HBG SHEER CHUNNI BLUE DK	21
HHG VINTAGE8 DIAMOND HL	20	HHG ROSE SHEER BLUE HL	21
HBG MIDTOWN BEIGE LT	13	HBG TRAVERTINE MARBLE BEIGE	14
HBG MIDTOWN BEIGE DK	13	HBG TRAVERTINE MARBLE BROWN	14
HHG RHOMBOID MIDTOWN HL	13	HHG TRAVERTINE MARBLE STRIPS HL	14
HBG ONYX MARBLE BEIGE	16	HBG VENEZIA OAK WOOD LT	18
HBG ONYX MARBLE BROWN	16	HBG VENEZIA OAK WOOD DK	18
HHG ONYX 2BY3 ENGRAVING HL	16	HHG 3D CYLINDER OAK WOOD HL	18
HBG PLAIN WHITE	07	HBG 6BY4 BRICKS CREAMA	05
HBG PLAIN IVORY	07	HBG 6BY4 BRICKS GREY	05
HHG TEA CUP GOLDEN HL	07	HBG 6BY4 BRICKS SILVER	05
HHG 2BY3 MOROCCAN MULTI HL	07	HBG 6BY4 BRICKS TURQUOISE	05
		HBG 6BY4 BRICKS WHITE	05

300x3000mm | MATCHING FLOOR

HFM ANTI-SKID ARMANI BROWN	14
HFM ANTI-SKID ARMANI GREY DK	11
HFM ANTI-SKID ATLANTIC GREY DK	09
HFM ANTI-SKID BOTTOCINO BEIGE DK	12
HFM ANTI-SKID CEMENTO GREY DK	09
HFM ANTI-SKID CLASSIC DYNA BEIGE	13
HFM ANTI-SKID EMPERADOR BROWN	20
HFM ANTI-SKID MIDTOWN BEIGE DK	13
HFM ANTI-SKID ONYX BROWN	16
HFM ANTI-SKID SAND BEIGE DK	16
HFM ANTI-SKID SAND GREY DK	10
HFM ANTI-SKID SEA PEBBLES	22
HFM ANTI-SKID SIMPLE WHITE	05
HFM ANTI-SKID SOAPSTONE GREY DK	11
HFM ANTI-SKID STATUARIO WHITE	08
HFM ANTI-SKID TRAVERTINE BROWN	14
HFM ANTI-SKID VENEZIA OAK WOOD DK	18



Listed on BSE (530365) for 30+ years.
And also on NSE (ORIENTBELL).

300x450mm
**CERAMIC
WALL TILES**



Description Code

HBG : Hoskote Base Glossy

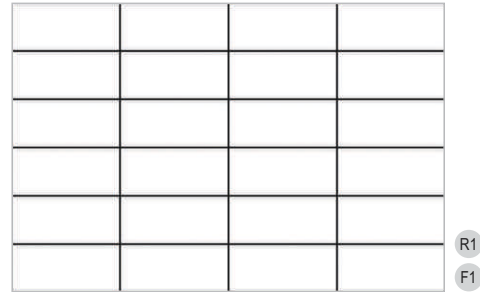
HHG : Hoskote Highlighter Glossy

HFM : Hoskote Floor Matte



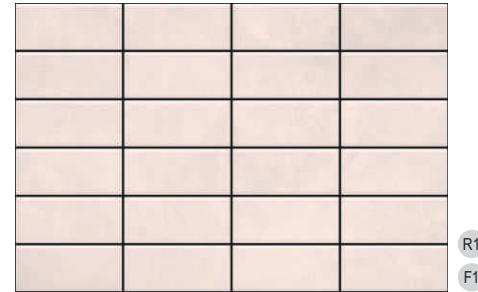
R1
F1

HBG 6BY4 BRICKS SILVER



R1
F1

HBG 6BY4 BRICKS WHITE



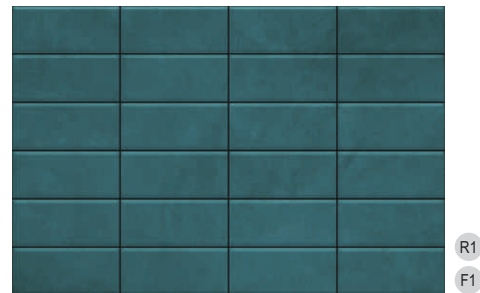
R1
F1

HBG 6BY4 BRICKS CREAMA



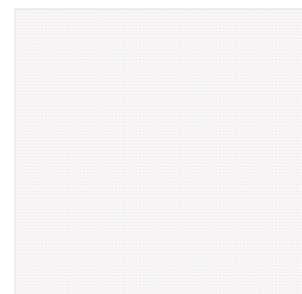
R1
F1

HBG 6BY4 BRICKS GREY



R1
F1

HBG 6BY4 BRICKS TURQUOISE

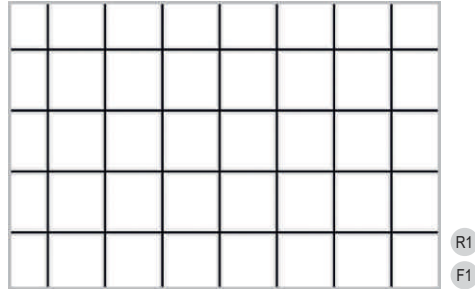


G4
R4
F4

300x300mm |
HFM ANTI-SKID SIMPLE WHITE

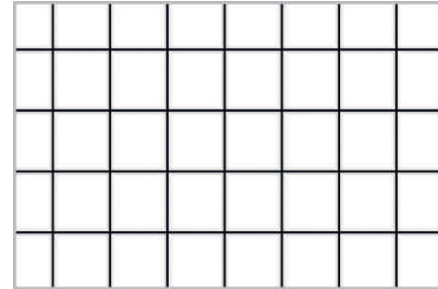


Preview Shown: HBG 6BY4 BRICKS GREY



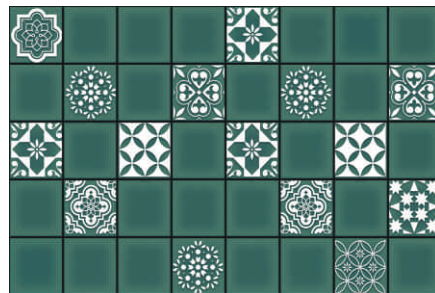
HBG PLAIN MOSAIC WHITE

R1
F1



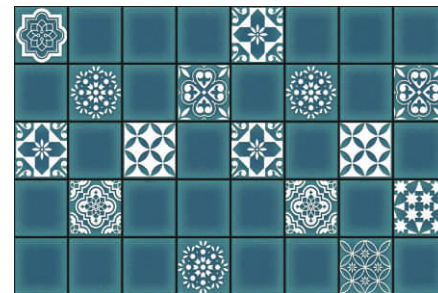
HBG PLAIN MOSAIC WHITE

R1
F1



HHG MOROCCAN15 MOSAIC GREEN HL

R1
F1



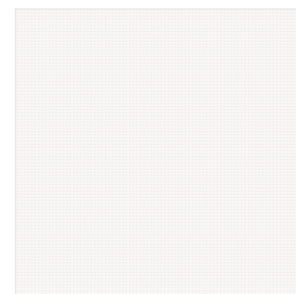
HHG MOROCCAN15 MOSAIC BLUE HL

R1
F1



HHG MOROCCAN15 MOSAIC RED HL

R1
F1

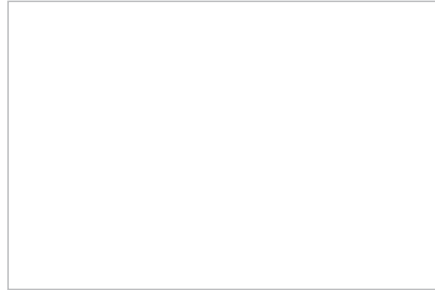


300x300mm |
HFM ANTI-SKID SIMPLE WHITE

G4
R4
F4

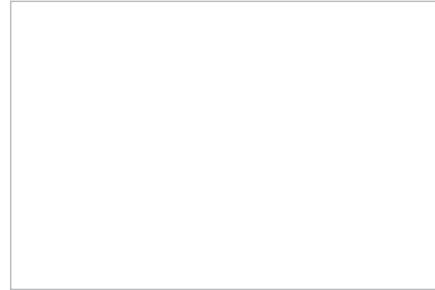


Preview Shown: HHG MOROCCAN15 MOSAIC BLUE HL & HBG PLAIN MOSAIC WHITE



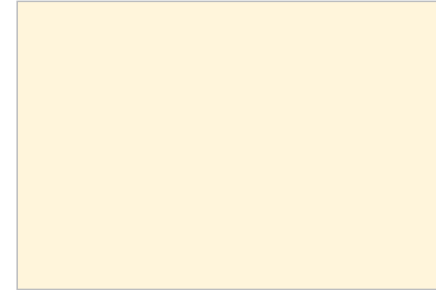
R1
F1

HBG PLAIN WHITE



R1
F1

HBG PLAIN WHITE



R1
F1

HBG PLAIN IVORY



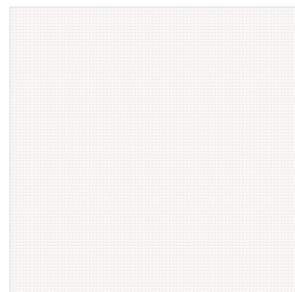
R1
F1

HHG TEA CUP GOLDEN HL



R1
F1

HHG 2BY3 MOROCCAN MULTI HL



G4
R4
F4

300x300mm |
HFM ANTI-SKID SIMPLE WHITE



Preview Shown: HBG PLAIN IVORY & HHG 2BY3 MOROCCAN MULTI HL



R3
F4

HBG STATUARIO WHITE



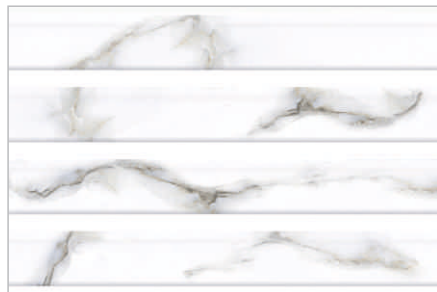
R3
F4

HBG STATUARIO WHITE



R3
F4

HBG CLASSIC CARRARA MARBLE



R1
F1

HHG STATUARIO STRIPS WHITE HL



R1
F1

HHG STATUARIO CRACKLE MOSAIC HL



G4
R4
F4

300x300mm |
HFM ANTI-SKID STATUARIO
WHITE



G4
R4
F4

300x300mm |
HFM ANTI-SKID STATUARIO
WHITE

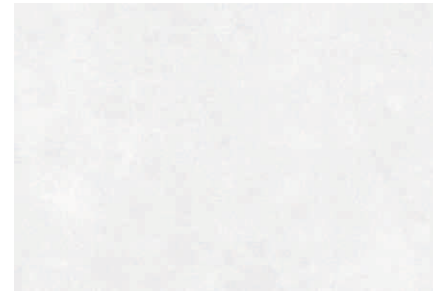


Preview Shown: HBG STATUARIO WHITE, HHG STATUARIO STRIPS WHITE HL &
HFM ANTI-SKID STATUARIO WHITE



R3
F4

HBG ATLANTIC STONE GREY LT



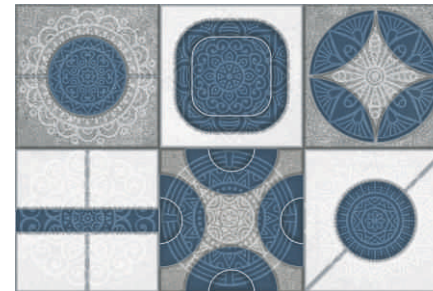
R3
F4

HBG CEMENTO GREY LT



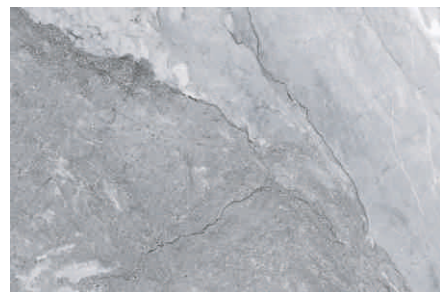
R1
F1

HHG ATLANTIC DIAMOND ART4 HL



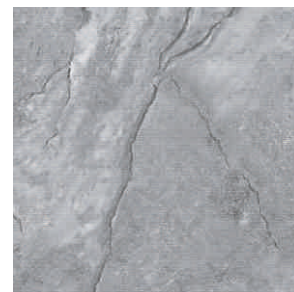
R1
F1

HHG CEMENTO GEOMETRIC ART HL



R3
F4

HBG ATLANTIC STONE GREY DK



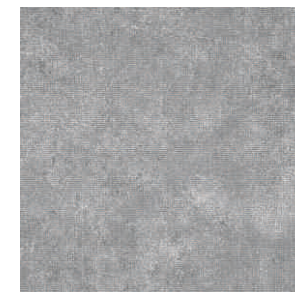
G4
R4
F4

300x300mm I
HFM ANTI-SKID ATLANTIC GREY DK



R3
F4

HBG CEMENTO GREY DK



G4
R4
F4

300x300mm I
HFM ANTI-SKID CEMENTO GREY DK



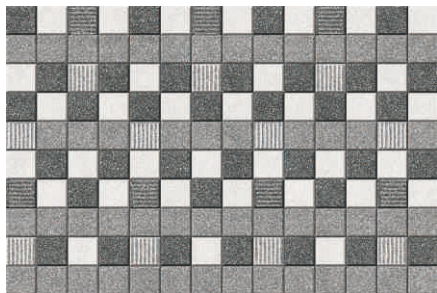
R1
F1

HBG SAND GREY LT



R1
F1

HBG SAND GREY LT



R1
F1

HHG SAND MOSAIC GREY HL



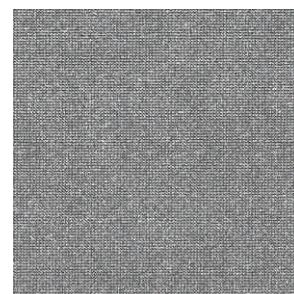
R1
F1

HHG MORROCAN ART MULTI HL



R1
F1

HBG SAND GREY DK



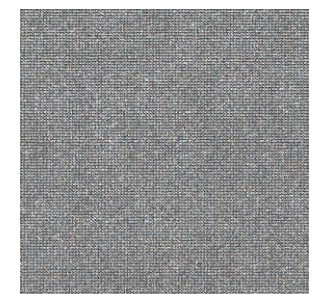
G4
R4
F4

300x300mm I
HFM ANTI-SKID SAND GREY DK



R1
F1

HBG SAND GREY DK



G4
R1
F1

300x300mm I
HFM ANTI-SKID SAND GREY DK



R3
F4

HBG ARMANI MARBLE GREY LT



R3
F4

HBG SOAPSTONE GREY LT



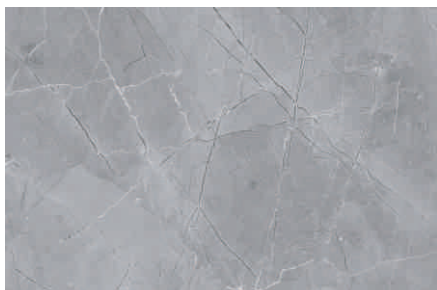
R1
F1

HHG ARMANI PALM LEAF HL



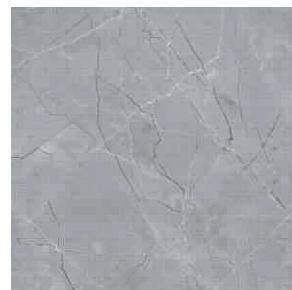
R1
F1

HHG SOAPSTONE LILY MOSAIC GREY HL



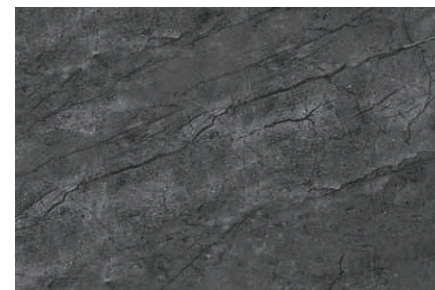
R3
F4

HBG ARMANI MARBLE GREY DK



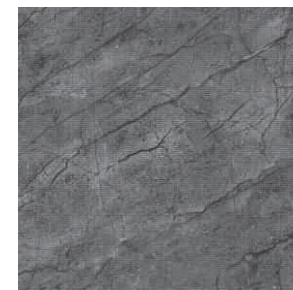
G4
R4
F4

300x300mm I
HFM ANTI-SKID ARMANI GREY DK



R3
F4

HBG SOAPSTONE GREY DK



G4
R4
F4

300x300mm I
HFM ANTI-SKID SOAPSTONE
GREY DK



R3
F4

HBG BOTTOCINO BEIGE LT



R3
F4

HBG BOTTOCINO BEIGE LT



R1
F1

HHG BOTTOCINO COFFEE BEANS HL



R1
F1

HHG BOTTOCINO INLAY LEAVES HL



HBG BOTTOCINO BEIGE DK



G4
R4
F4

300x300mm I
HFM ANTI-SKID BOTTOCINO
BEIGE DK



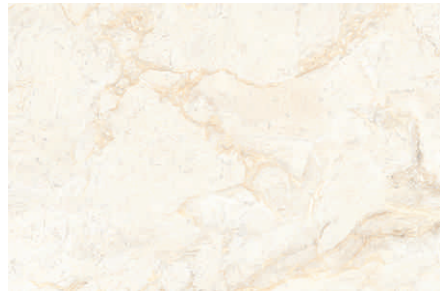
R3
F4

HBG BOTTOCINO BEIGE DK



G4
R4
F4

300x300mm I
HFM ANTI-SKID BOTTOCINO
BEIGE DK



R3
F4

HBG CLASSIC DYNA CREAMA



R3
F4

HBG MIDTOWN BEIGE LT



R1
F1

HHG DYNA FLORAL LEAVES HL



R1
F1

HHG RHOMBOID MIDTOWN HL



R3
F4

HBG CLASSIC DYNA BEIGE



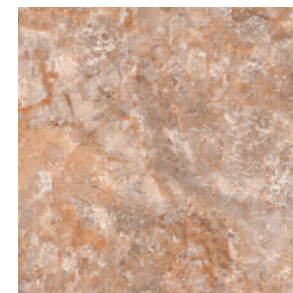
G4
R4
F4

300x300mm I
HFM ANTI-SKID CLASSIC
DYNA BEIGE



R3
F4

HBG MIDTOWN BEIGE DK



G4
R4
F4

300x300mm I
HFM ANTI-SKID MIDTOWN
BEIGE DK



R3
F4

HBG ARMANI MARBLE BROWN LT



R3
F4

HBG TRAVERTINE MARBLE BEIGE



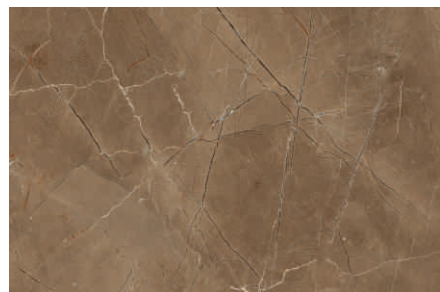
R1
F1

HHG ARMANI GEOMETRIC ART HL



R1
F1

HHG TRAVERTINE MARBLE STRIPS HL



R3
F4

HBG ARMANI MARBLE BROWN DK



G4
R4
F4

300x300mm I
HFM ANTI-SKID ARMANI BROWN



R3
F4

HBG TRAVERTINE MARBLE BROWN



G4
R4
F4

300x300mm I
HFM ANTI-SKID TRAVERTINE
BROWN



Preview Shown: HBG ARMANI MARBLE BROWN LT, HHG ARMANI GEOMETRIC ART HL & HBG ARMANI MARBLE BROWN DK & HFM ANTI-SKID ARMANI BROWN



R1
F1

HBG SAND BEIGE LT



R3
F4

HBG ONYX MARBLE BEIGE



R1
F1

HHG STARGAZER BEIGE HL



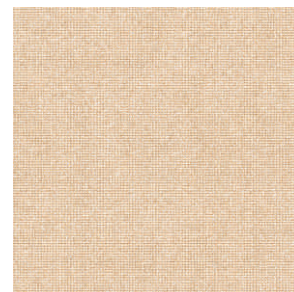
R1
F1

HHG ONYX 2BY3 ENGRAVING HL



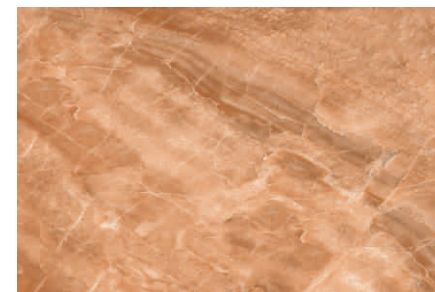
R1
F1

HBG SAND BEIGE DK



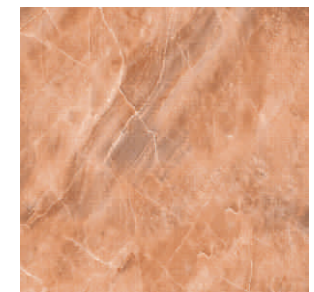
G4
R4
F4

300x300mm |
HFM ANTI-SKID SAND BEIGE DK



R3
F4

HBG ONYX MARBLE BROWN



G4
R4
F4

300x300mm |
HFM ANTI-SKID ONYX BROWN



Preview Shown: HBG ONYX MARBLE BEIGE, HHG ONYX 2BY3 ENGRAVING HL , HBG ONYX MARBLE BROWN & HFM ANTI-SKID ONYX BROWN



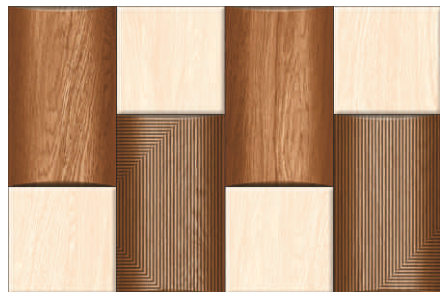
R3
F4

HBG VENEZIA OAK WOOD LT



R3
F4

HBG RIOS BEIGE



R1
F1

HHG 3D CYLINDER OAK WOOD HL



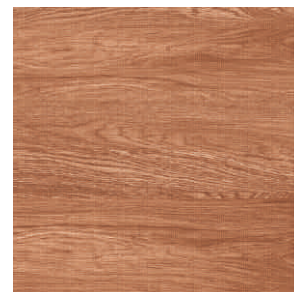
R3
F4

HBG RIOS BROWN



R3
F4

HBG VENEZIA OAK WOOD DK



G4
R4
F4

300x300mm I
HFM ANTI-SKID VENEZIA
OAK WOOD DK



Preview Shown: HBG VENEZIA OAK WOOD LT, HHG 3D CYLINDER OAK WOOD HL,
HBG VENEZIA OAK WOOD DK & HFM ANTI-SKID VENEZIA OAK WOOD DK



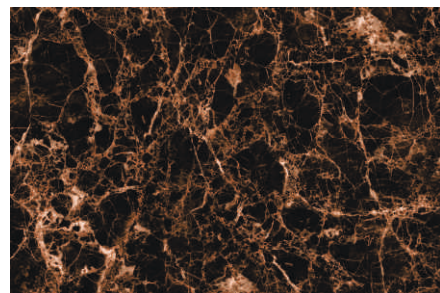
R3
F4

HBG EMPERADOR MARBLE BEIGE



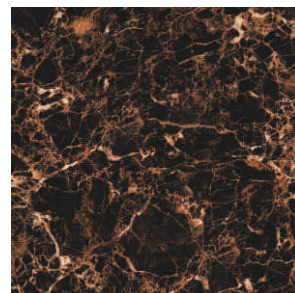
R3
F4

HHG VINTAGE8 DIAMOND HL



R3
F4

HBG EMPERADOR MARBLE BROWN



G4
R4
F4

300X300MM |
HFM ANTI-SKID EMPERADOR BROWN



Preview Shown: HBG EMPERADOR MARBLE BEIGE, HHG VINTAGE DIAMOND HL, HBG EMPERADOR MARBLE BROWN & HFM ANTI-SKID EMPERADOR BROWN



R3
F4

HBG SHEER CHUNNI BLUE LT



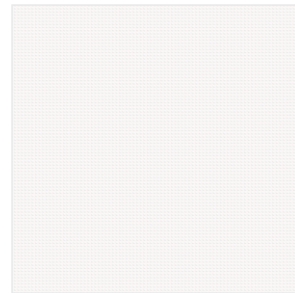
R1
F1

HHG ROSE SHEER BLUE HL



R3
F4

HBG SHEER CHUNNI BLUE DK



G4
R4
F4

300x300mm |
HFM ANTI-SKID SIMPLE WHITE



Preview Shown: HBG SHEER CHUNNI BLUE LT & HHG ROSE SHEER BLUE HL



R1
F1

HBG SEA SKY



R2
F4

HHG SEA FISH MID HL



R2
F4

HHG SEA FISH BOTTOM HL



R2
F4

HBG SEA PEBBLES MULTI



G4
R1
F1

300x300mm |
HFM ANTI-SKID SEA PEBBLES



Preview Shown: HBG SEA SKY, HHG SEA FISH MID HL, HHG SEA FISH BOTTOM HL, HBG SEA PEBBLES MULTI & HFM ANTI-SKID SEA PEBBLES

TECHNICAL SPECIFICATIONS Sparkle Wall

Packing Details			
Size	No. of Tiles Per Carton		
(In mm.)		(In Sq. Mtr.)	(In Sq. Ft.)
300x450	6	0.81	8.718

Characteristics	Test Method	Standard as per ISO 13006:2018/EN144 11 Bill	Requirement as per IS 15622:2017 E>10(GROUP B III)		OBL Norms
			Unrectified	Rectified	
Dimension & Surface Quality					
Deviation in Length & Width	IS 13630 Part 1 & ISO 10545-2	± 0.5 %	± 0.4%	± 0.2 %	± 0.2 %
Deviation in Thickness		± 10 %	± 5.0 %		± 3.0%
Straightness of Sides		± 0.3 %	± 0.2 %	± 0.15 %	0.15%
Rectangularity		± 0.3 %	± 0.3 %	± 0.2 %	0.2%
Surface Flatness		± 0.5 %	± 0.3 %		± 0.2%
Surface Quality		>95% Visible Defect Free	Min 95% of the tiles shall be free from visible defects that would impair the appearance of a major area of the tile		Conforms
Physical Properties					
Water Absorption (%)	IS 13630 Part 2 & ISO 10545-3	Average >10%	Average E >10%		10±2%
Modulus of Rupture in [N/mm ²]	IS 13630 Part 6 & ISO 10545-4	Average >15 N/mm ²	Min 15, for thickness < 7.5 mm Min 12, for thickness ≥ 7.5 mm		15 Min for thickness <7.5mm 12 Minimum for Thickness ≥7.5 mm
Breaking Strength in N	IS 13630 Part 6 & ISO 10545-4	Average >600 N	< 7.5 mm thickness: 200, Min ≥ 7.5 mm thickness: 600, Min		200 Min for thickness <7.5mm 600 Minimum for Thickness ≥7.5 mm
Moisture Expansion in mm/m	IS 13630 Part 3 & ISO 10545-10		0.04, Max		Max 0.04
Scratch Hardness of Surface (Moh's Scale)	IS 13630 Part 13	Not Required	3, Min		Min 3
Resistance to Surface Abrasion of Glazed Tiles (Class I to V)	IS 13630 Part 11 & ISO 10545-7	As per report	Class II, Min		Class II Min
Co-efficient of Linear Thermal Expansion from Ambient Temperature to 100°C	IS 13630 Part 4 & ISO 10545-8	As per report	9x10 ⁻⁶ max		9x10 ⁻⁶ max
Thermal Shock Resistance	IS 13630 Part 5 & ISO 10545-9	10 Cycle Min	10 cycles, Min		Passed
Crazing Resistance Glazed Tiles	IS 13630 Part 9 & ISO 10545-11	Required	4 Cycles@7.5 bar, Min		4 Cycles at 7.5 Bar
Impact Resistance- Coefficient of Restitution	IS 13630 Part 14 & ISO 10545-5	0.55, Min	0.55, Min		Min 0.6
Chemical Properties					
Resistance to Staining of Glazed Tiles	IS 13630 Part 8 & ISO 10545-13/14	Min class 3	Class I, Min		Min class3 /Min class 1
Resistance to Household Chemicals		Min class UB	Class AA, Min		Min class UB/Min class AA
Resistance to Acids and Alkalis (with exception of hydrofluoric acid and its compound)		as per mfg.	Required, if agreed		Resistant



Making Tile Selection Easier



Find tiles similar to a reference image



Tiles selected by you in your room



Visualise selected tiles & get a quote



Share layout for a personalised render*

www.orientbell.com

CORPORATE OFFICE:

Iris House, 16 Business Centre,
Nangal Raya, New Delhi-110046, India
Tel: +91-11-47119100, Fax: +91 -11-2852 1273

CIN: L14101UP1977PLC021546

REGISTERED OFFICE:

8 Industrial Area, Sikandrabad-203 205 (UP), India
Tel: +91-5735-222-203 / 24, +91-8191004575/ 76
Fax: +91 -5735 222 642

CUSTOMER CARE:

customercare@orientbell.com
Call : 87507 11111
Whatsapp : 87507 33333

Please join us on social media

