



Scratch Free Tiles
600x1200mm

www.orientbell.com





About OBL

Orient Bell Limited (OBL) is amongst the largest manufacturers of Wall and Floor Tiles. Established in 1977, OBL has been a pioneer in the Industry with a focus on customer-centric innovation.

First to manufacture ultra-vitrified tiles, new product designs & development is a continuous process at OBL. As a result it has an extensive range of tiles with various finishes & textures. It has 4 patent-pending technologies: Forever Tiles, GermFree Tiles, Cool Tiles & Life Tiles.

To display extensive range of tiles, we have a chain of signature showrooms. Privileged to be associated with premier architects and construction agencies of the country, it also counts most leading developers as well as government & public sector institutions as its customers.



OBL Awards & Accolades

Realty+ recognizes the best of the best within the ranks of Indian Real Estate



Website of The Year 2024
for www.orientbell.com
(India's construction & design industry)



Indian Digital Marketing 2023
Best use of social media



e4m Pride of India Brands 2022
(The Best Of Bharat Conference & Awards)



Brand of The Year 2023
(Flooring Idea-Tiles & Ceramic)



Customer Retail Journey Innovation
Winners Future of Retail Summit & Awards 2020



CEO with HR Orientation
ZEE BUSINESS
National Human Capital Leadership Congress & Awards



**Listed on BSE (530365) for 30+ years.
And also on NSE (ORIENTBELL).**

At OBL we believe in excellence. The ISO 9001:2015 accreditation for our quality control management systems reflects this quest for manufacturing products that meet international standards. In 2015 our Sikandarabad plant was awarded with prestigious ISI certification for its products.

As early as in May 2000, OBL was awarded the prestigious ISO 14001 certification by the internationally recognised BSI Management Systems, UK. Our manufacturing units are ISO 14001:2015 certified, the most complete and global expression for an environment friendly industrial company.

We believe in making great products in a safe, healthy and environment friendly way. We have been awarded OHSAS 18001 Certification for Health & Safety Standards. No waste water is ever discharged from our factory.

OBL won the "Certificate Of Merit" in National Energy Conservation Award' 2016 organised by Ministry of Power for saving Power and Fuel consumption.

INDEX

600x1200mm

BHF Chips Multi FT	06
BHF Crystal Onyx Vanilla FT	05
BHF Geometric Quartzite HL FT	26
BHF Grainy Limestone Camel FT	27
BHF Grainy Limestone Taupe FT	28
BHF Grunge Mosaic HL FT	24
BHF Grunge Peanut FT	23
BHF Hickory Walnut Wood FT	30
BHF Quartzite Crema FT	25
BHF Sandstone Beaver FT	12
BHF Sandstone Beige FT	11
BHF Sandstone Grey FT	08
BHF Sandstone Moroccan Grey HL FT	09
BHF Sandstone Myolica Multi HL FT	13
BHF Sandstone Platinum FT	07
BHF Sandy Brick Mushroom HL FT	21
BHF Sandy Grey FT	16
BHF Sandy Mushroom DK FT	20
BHF Sandy Mushroom LT FT	19
BHF Sandy Silver FT	15
BHF Sandy Triangle Grey HL FT	17
BHF Statuario Glacier FT	04
BHF Strips Oak Wood Multi FT	31
BHF Veneer Wood Crema FT	29

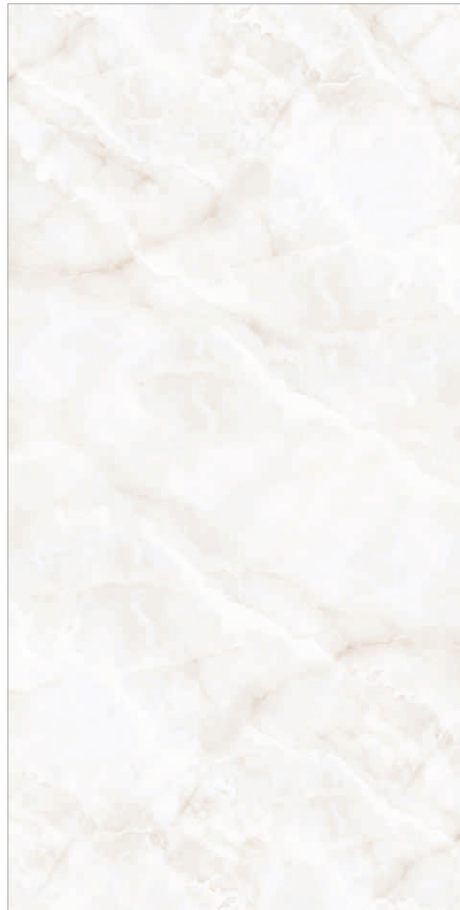


Preview Shown: BHF Statuario Glacier FT



G5
R3
F4

BHF Statuario Glacier FT



G5
R3
F4

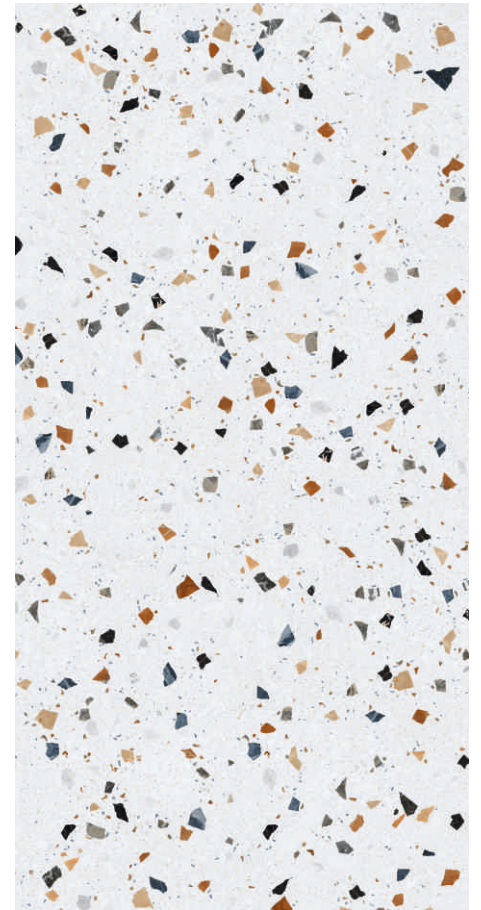
BHF Crystal Onyx Vanilla FT



Preview Shown: BHF Crystal Onyx Vanilla FT



Preview Shown: BHF Chips Multi FT



G5
R3
F4

BHF Chips Multi FT



G5
R3
F4

BHF Sandstone Platinum FT



Preview Shown: BHF Sandstone Platinum FT



Scratch Free Tiles

600x1200mm

MATTE FINISH



Preview Shown: BHF Sandstone Grey FT



G5
R3
F4

BHF Sandstone Grey FT



G5
R1
F1

BHF Sandstone Moroccan
Grey HL FT



Preview Shown: BHF Sandstone Moroccan Grey HL FT & BHF Sandstone Grey FT



G5
R3
F4

BHF Sandstone Platinum FT



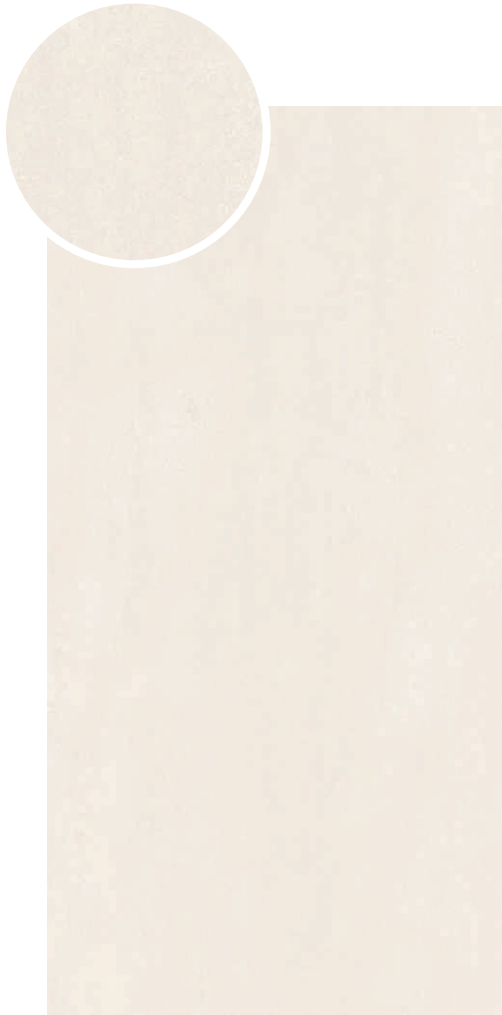
G5
R1
F1

BHF Sandstone Moroccan
Grey HL FT



G5
R3
F4

BHF Sandstone Grey FT



G5
R3
F4

BHF Sandstone Beige FT



Preview Shown: BHF Sandstone Beige FT



Preview Shown: BHF Sandstone Beaver FT



BHF Sandstone Beaver FT

G5
R3
F4



G5
R1
F1

BHF Sandstone Myolica
Multi HL FT



Preview Shown: BHF Sandstone Myolica Multi HL FT, BHF Sandstone Beige FT & BHF Sandstone Beaver FT



BHF Sandstone Beige FT

G5
R3
F4



BHF Sandstone Myolica
Multi HL FT

G5
R1
F1



BHF Sandstone Beaver FT

G5
R3
F4



G5
R3
F4

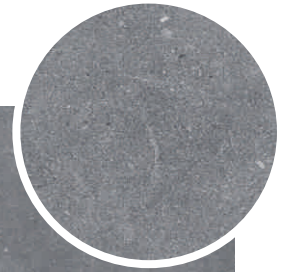
BHF Sandy Silver FT



Preview Shown: BHF Sandy Silver FT

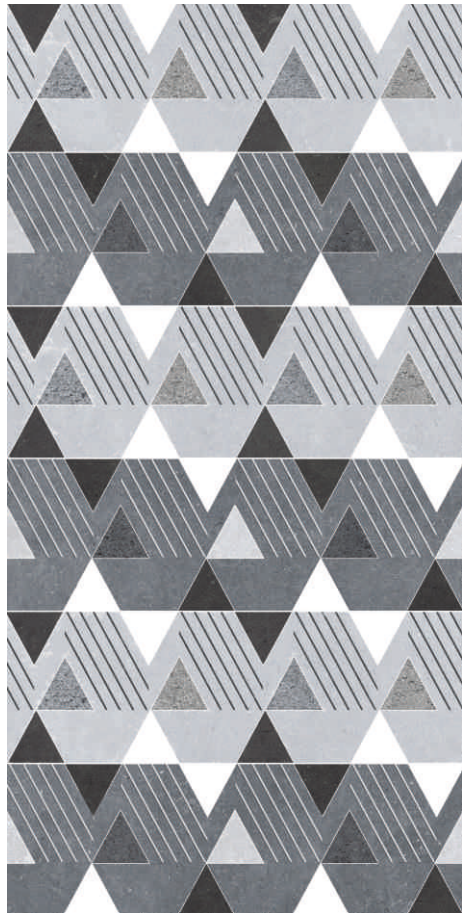


Preview Shown: BHF Sandy Grey FT, BHF Sandy Silver FT & BHF Sandy Triangle Grey HL FT



G5
R3
F4

BHF Sandy Grey FT



G5
R1
F1

BHF Sandy Triangle Grey
HL FT

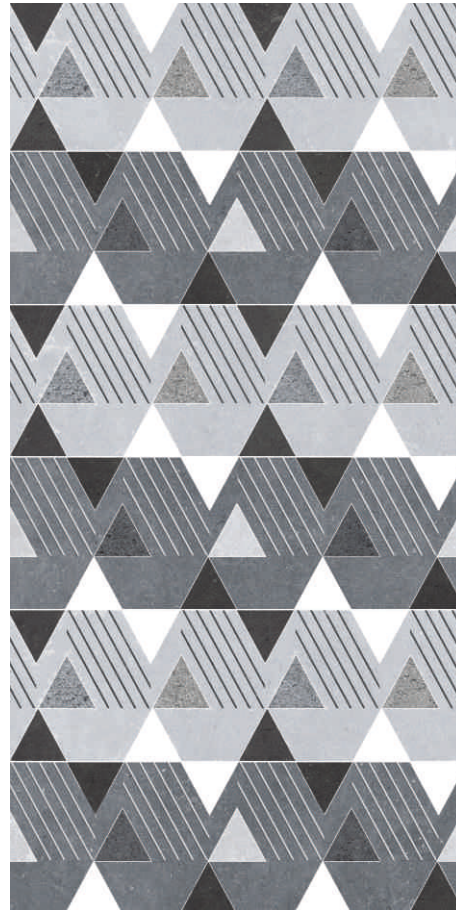


Preview Shown: BHF Sandy Triangle Grey HL FT, BHF Sandy Silver FT & BHF Sandy Grey FT



G5
R3
F4

BHF Sandy Silver FT



G5
R1
F1

BHF Sandy Triangle
Grey HL FT



G5
R3
F4

BHF Sandy Grey FT



G5
R3
F4

BHF Sandy Mushroom LT FT



Preview Shown: BHF Sandy Mushroom LT FT



Scratch Free Tiles

600x1200mm
MATTE FINISH

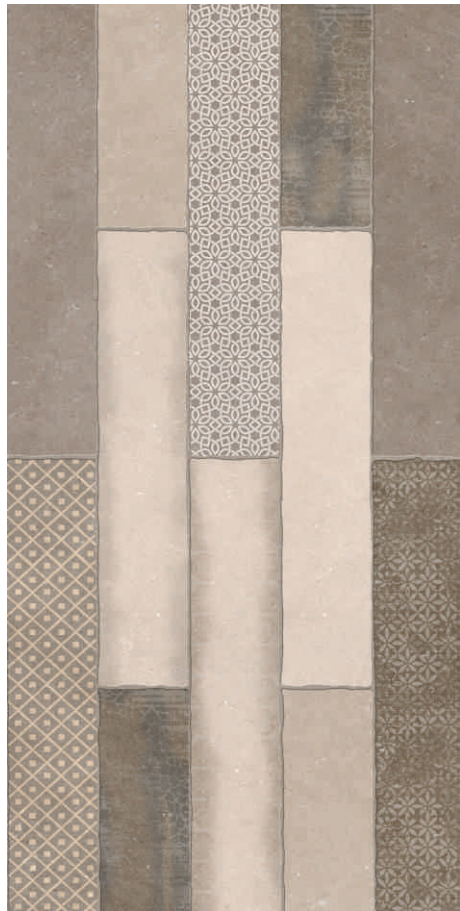


Preview Shown: BHF Sandy Mushroom DK FT



BHF Sandy Mushroom DK FT

G5
R3
F4



G5
R1
F1

BHF Sandy Brick Mushroom
HL FT

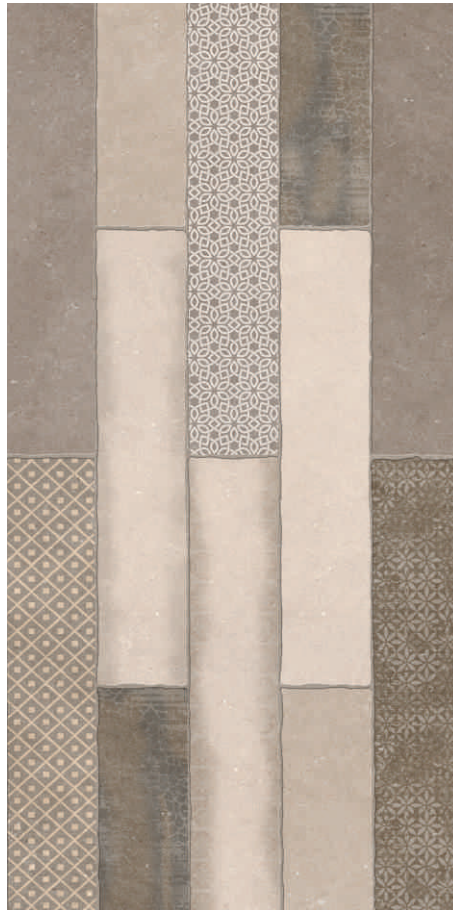


Preview Shown: BHF Sandy Brick Mushroom HL FT & BHF Sandy Mushroom LT FT



G5
R3
F4

BHF Sandy Mushroom LT FT



G5
R1
F1

BHF Sandy Brick Mushroom
HL FT



G5
R3
F4

BHF Sandy Mushroom DK FT



G5
R3
F4

BHF Grunge Peanut FT



Preview Shown: BHF Grunge Peanut FT



Preview Shown: BHF Grunge Mosaic HL FT



G5
R1
F1

BHF Grunge Mosaic HL FT



G5
R3
F4

BHF Quartzite Crema FT



Preview Shown: BHF Quartzite Crema FT

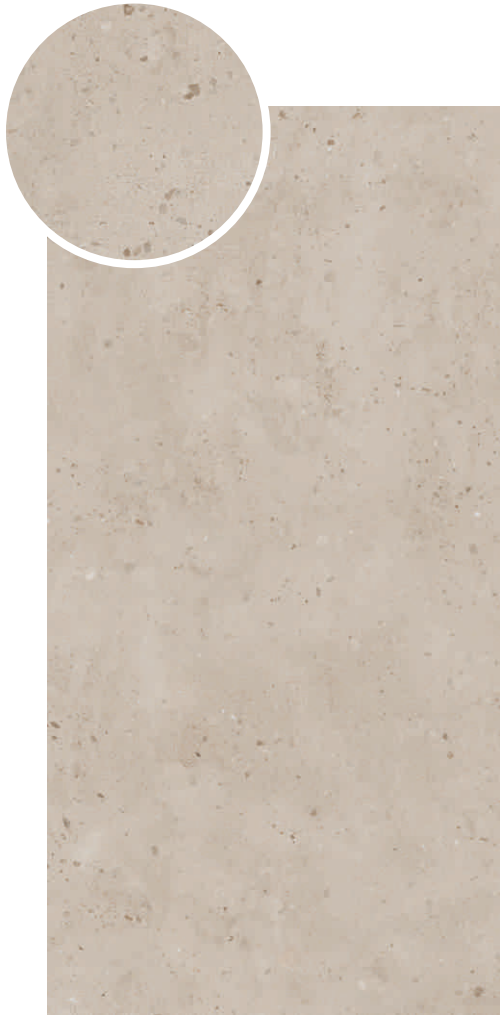


Preview Shown: BHF Geometric Quarzite HL FT & BHF Quartzite Crema FT



G5
R1
F1

BHF Geometric Quarzite
HL FT



G5
R3
F4

BHF Grainy Limestone
Camel FT



Preview Shown: BHF Grainy Limestone Camel FT



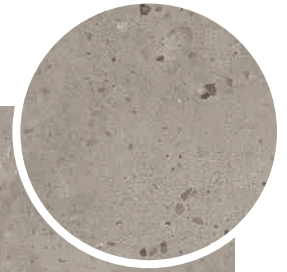
Scratch Free Tiles

600x1200mm

MATTE FINISH



Preview Shown: BHF Grainy Limestone Taupe FT



G5
R3
F4

**BHF Grainy Limestone
Taupe FT**



G5
R3
F4

**BHF Veneer Wood
Crema FT**



Preview Shown: BHF Veneer Wood Crema FT



Preview Shown: BHF Hickory Walnut Wood FT



G6
R3
F4

BHF Hickory Walnut
Wood FT



G5
R1
F1

**BHF Strips Oak Wood
Multi FT**



TECHNICAL SPECIFICATIONS Scratch Free Tiles



Packing Details					
Size	No. of Tiles	Covered Area Per Box		Average Weight / Box	Box / Pallet
(In mm.)	Per Carton	(In Sq. Mtr.)	(In Sq. Ft.)	(In Kg. approx)	(Nos.)
600x1200	2	1.44	15.5	28.2	52

Characteristics	Standard as Per IS 15622:2017 Group BIIa	OBL Norms	Testing Methods
Dimension & Surface Quality			
Deviation in Length & Width	± 0.1 %	±0.05%	IS 13630 Part 1
Deviation in Thickness	± 5.0 %	±3.0%	
Straightness of Sides	± 0.1 %	±0.1%	
Rectangularity	± 0.1 %	±0.1%	
Surface Flatness	± 0.5 %	± 0.2 %	
Surface Quality	Min 95% of the tiles shall be free from visible defects that would impair the appearance of a major area of the tile	Conforms	
Physical Properties			
Water Absorption %	3-6%	3-6%	IS 13630 Part 2
Modulus of Rupture in N/mm ²	Avg 22, Individual 27 Min	Min 32 N	IS 13630 Part 6
Breaking Strength N	600 Min for thickness < 7.5mm, 1000 Min for thickness ≥ 7.5 mm	1100 N Min	
Moisture Expansion	0.02, Max	0.02 Max	IS 13630 Part 3
Scratch Hardness (Moh's Scale)	5, Min	7-8	IS 13630 Part 13
Resistance to Surface Abrasion of glazed tiles Class I to V (Applicable for floor applications only)	Class II, Min	Class IV	IS 13630 Part 11
Linear thermal expansion Co-efficient	9x10 ⁻⁶ , Max	Conforms	IS 13630 Part 4
Thermal Shock Resistance	10 Cycles, Min	Passed	IS 13630 Part 5
Crazing Resistance	4 Cycles at 7.5 Bar, Min	Passed	IS 13630 Part 9
Impact Resistance	0.55, Min	0.6	IS 13630 Part 14
Frost Resistance	Required if agreed to between manufacturer and purchaser	Resistant	IS 13630 Part 10
Bulk density g/cc	2.0, Min	2.0, Min	IS 13630 Part 2
Chemical Properties			
Stain Resistance Glazed tiles	Class I, Min	Class -1	IS 13630 Part 8
Resistance to household chemicals	Class AA, Min	Class AA	
Resistance to acids and alkalis	Class AA, Min	Class AA	



Making Tile Selection Easier



Find tiles similar to a reference image



Tiles selected by you in your room



Visualise selected tiles & get a quote



Share layout for a personalised render*

www.orientbell.com

CORPORATE OFFICE:

Iris House, 16 Business Centre,
Nangal Raya, New Delhi-110046, India
Tel: +91-11-47119100, Fax: +91 -11-2852 1273

CIN: L14101UP1977PLC021546

REGISTERED OFFICE:

8 Industrial Area, Sikandrabad-203 205 (UP), India
Tel: +91-5735-222-203 / 24, +91-8191004575/ 76
Fax: +91 -5735 222 642

CUSTOMER CARE:

customercare@orientbell.com
☎ 87507 11111
📞 Whatsapp : 87507 33333

Please join us on social media

