



HEALTHCARE TILES **CATALOGUE**

About OBL

Orient Bell Limited (OBL) is amongst the largest manufacturers of Wall and Floor Tiles. Established in 1977, OBL has been a pioneer in the Industry with a focus on customer-centric innovation.

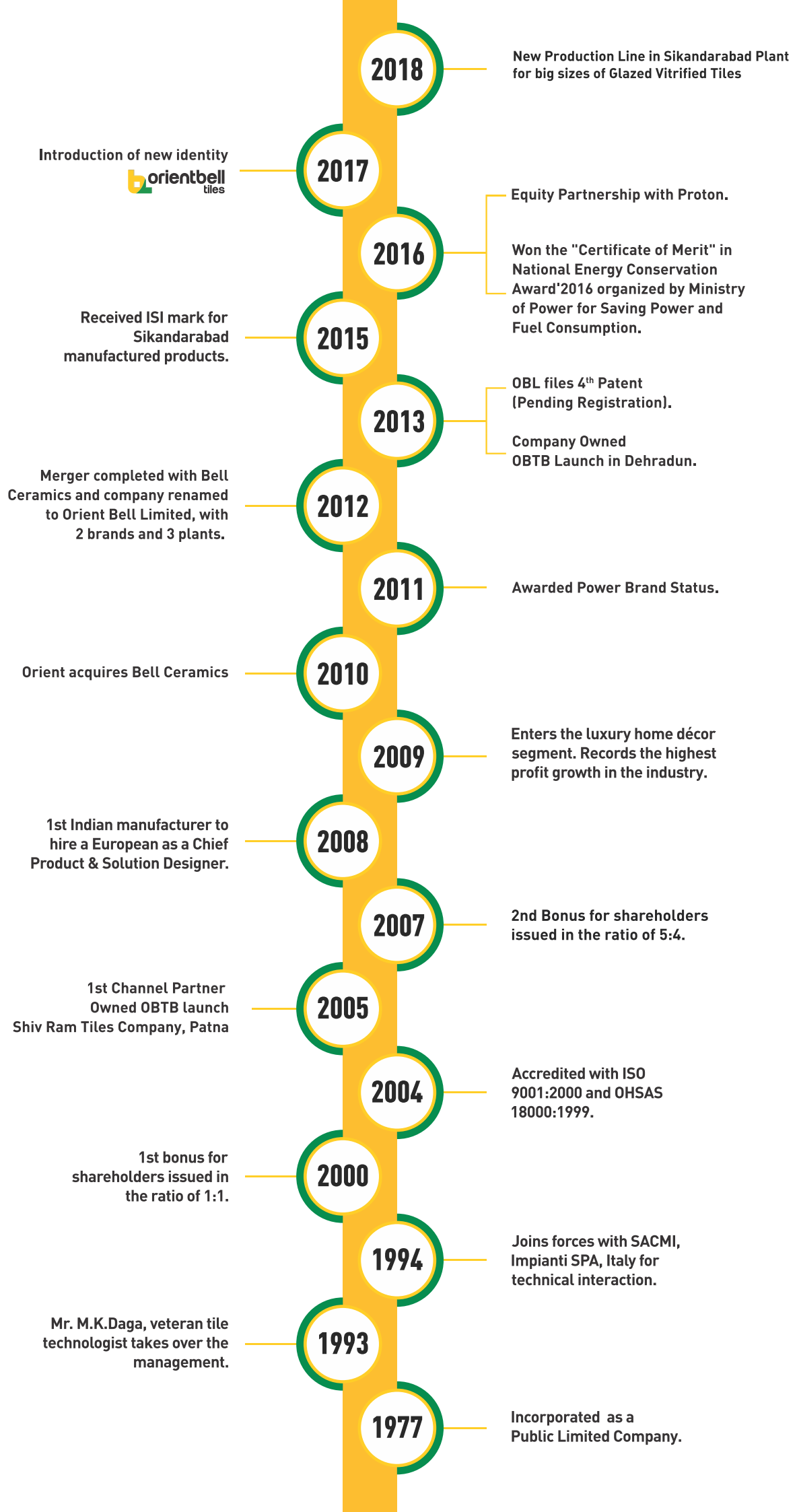
First to manufacture ultra-vitrified tiles, new product designs & development is a continuous process at OBL. As a result it has an extensive range of tiles with various finishes & textures. It has 4 patent-pending technologies: Forever Tiles, GermFree Tiles, Cool Tiles & Life Tiles.

To display extensive range of tiles, we have a chain of signature showrooms. Privileged to be associated with premier architects and construction agencies of the country, it also counts most leading developers as well as government & public sector institutions as its customers.



- The ISO 9001:2015 accreditation for our quality control management systems reflects the quest for manufacturing international standard products.
- In 2015 our Sikandarabad plant was awarded with prestigious ISI certification for its products.
- In May 2000, OBL was awarded ISO 14001 certification by the internationally recognised BSI Management Systems, UK.
- Our manufacturing units are ISO 14001:2015 certified, the most complete and global expression for an environment friendly industrial company.
- We have been awarded OHSAS 18001 Certification for Health & Safety Standards. No waste water is ever discharged from our factory.
- We were also awarded with "Certificate Of Merit" in 'National Energy Conservation Award' 2016 organised by Ministry of Power for saving Power and Fuel consumption.







INDEX

Why Choosing the right colour is Important*	01-02
Colour – Design Guide for Hospital Areas	03
Zoning	04
Suggested Colors for Different Wards / Departments	05
Reception	06-08
Waiting Spaces	09-11
Corridors	12-13
Operation Theaters	14-15
ICU	16-17
Nursing Stations	18-19
Mother and Child Spaces	20-24
Medical Laboratory and Research	24-25
GVT Floor Tiles	26-32

How to
choose
a tile of
right
colour
for your
healthcare
setup*



Orient Bell has tiles in wide range of colors and designs. Tile of right Colour design can play a part in the healing process and add to a sense of well-being. It is well known that room colours influence human behaviour. Several studies have proved that our moods and emotions are affected by the surrounding colours. Some colours offer a soothing effect while some have chances to remain aggressive.

Neutral colours such as beige, grey and cream can be very functional and useful colours for interiors. They are soft and can provide a warm effect, free of sharpness and also moderately stimulating. A tint of a beige wall colour can be used for ceilings. Note that colours which are greyed-off or toned down are relaxing and recede visually. This has been found to be very calming.

When deciding the colours of tiles for healthcare setup, it is even more important to be careful about the effects of colours and combinations. Each department should be done up with a colour suitable for that department.

**The below sources have been referred for the details on colors, choosing a suitable color, affects of colors, suggested colors for different departments, etc. in various sections of this brochure:*

•NHS Wales, UK ([http://www.wales.nhs.uk/sites3/Documents/254/B\(01\)02%20Lighting%20and%20colour.pdf](http://www.wales.nhs.uk/sites3/Documents/254/B(01)02%20Lighting%20and%20colour.pdf))

•https://www.buildingbetterhealthcare.com/news/article_page/The_psychology_of_colour/95179

•Coalition for Health Environments Research: Color in Healthcare Environments By Ruth Brent Tofle, Ph.D. Benjamin Schwarz, Ph.D So-Yeon Yoon,

MA Andrea Max-Royale, M.E.Des. (https://www.healthdesign.org/sites/default/files/color_in_hc_envirion.pdf)

Colour – Design Guide for Hospital Areas

1. Use tonal contrast: to provide a difference between adjacent surfaces (steps, wall and floor, doorways, etc.) to enhance visibility for users, especially the elderly or visually impaired. Light and dark colored tiles in the same color can be used to achieve this.



2. Limit the colour palette when choosing internal finish materials, using a lot of differing colours may lead to an environment which is too visually busy, leading to confusion and unease. It may also cause maintenance and storage problems of materials for repair.

3. Coordinate colours: try to coordinate colours of materials such as flooring with other finishing materials used. For example, the colour reference of the floor tile, wall tile and ceiling can later be extended to curtains.



4. Colour design and contrast for the visually impaired and older people:

- Many visually impaired people can make out a certain level of contrast in everyday lighting conditions, so it is useful for walls and floors to be of different light reflectances. As a general rule, a 20–30% difference in light reflectance value is sufficient for most people to understand environments more easily.

- Visually mark changes in floor gradients or slopes with different coloured tiles and contrast to alert people.
- There should be strong colour-contrast tiles at the approaches to tops and bottoms of stairs and escalators

Zoning

Zoning can be done by use of different coloured tiles in different areas, like floors of rooms, Corridors, reception, OPD, etc. Can be of different colors to depict each zone.

With large number of patients with a wide variety of diseases moving in the premises, it is critical to prevent spread of infection.

Tiles can be used as markers to depict direction, separation and distancing:



1. Direction of movement in corridors



2. Distance to be maintained in high traffic areas like reception, billing and OPD.

Suggested Colors for Different Wards / Departments

There are colour preferences among staff for either practical or diagnostic reasons:

Ward / Department	Colour Suggestion		Reason for Recommendation
Reception / Entrance	White + Any Color		White gives spacious and most pleasant appeal. However, white alone gives an eerie feel and thus wall or floor tiles should have another colour as well.
Maternity Ward	Orange		Pleasantly stimulating, suitably powerful and energetic colour for mother and new born.
Men / Women (adult) Wards	Blue		Blue is known to lower blood pressure and is excellent as a healing colour. it is the most popular colour with adults.
Walls Across the setup	Beige / Grey / Cream		They are soft and provide a warm effect, free of sharpness and also moderately stimulating
Common Areas	Grey (toned down)		Appears relaxing.
OPD / Maternity	Do not Use Yellow		Section where skin tones need to be checked for jaundice should not have yellow in surroundings.
Mental Health	Do not use Red / Orange		These colours are related to aggression.
Across Any Section	Do not use strong dark blues		This is a very cold colour and adversely affects mood.
Dermatology	Do not use Orange		Staff in these units also reported that reds and oranges make patients feel itchy

Reception

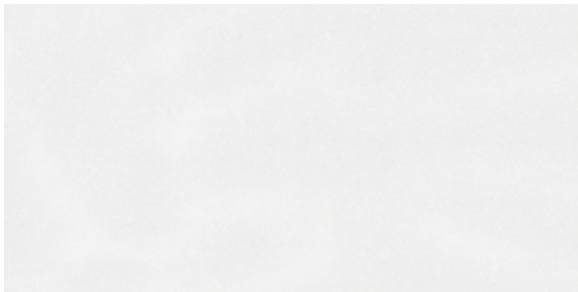




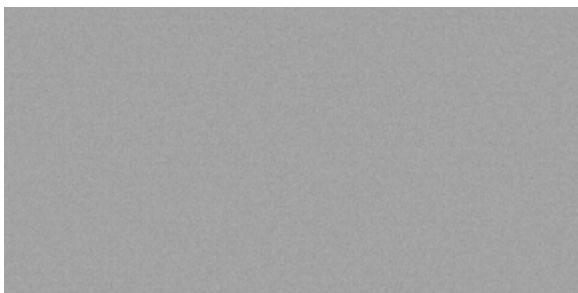
SDM APOLIMA GERY DK



SDM APOLIMA GREY FL



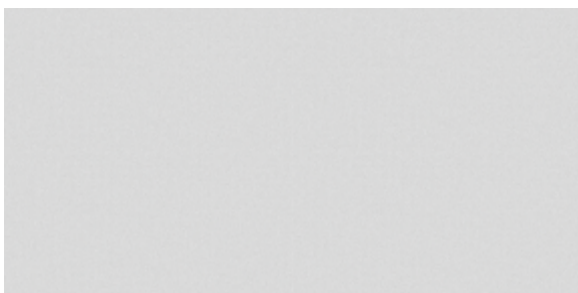
SDM APOLIMA GERY LT



SDG SIGMA GRIS



SDM SIGMA GRIS FL



SDG SIGMA SILVER



SDG SACRED BLUE DK



SDM SACRED BLUE FL



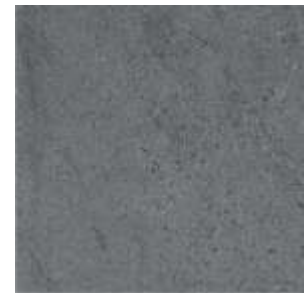
SDG SACRED BLUE LT



SDG LITHIA BROWN



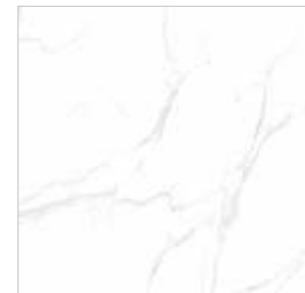
SDG LITHIA GREY



SDM LITHIA BROWN FL



SDG CRARA BIANCO



SDF CRARA BIANCO FL

Waiting Spaces

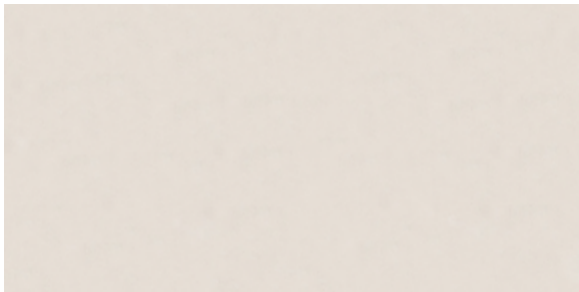




SDM TESSER BROWN



SDM TESSER BROWN FL



SDM TESSER BEIGE



SDM TRIANGLE SANDUNE



SDM TRIANGLE SANDUNE FL



SDM TRIANGLE BEIGE



SDG HOUSTON GREY DK



SDM HOUSTON GREY FL



SDG HOUSTON GREY LT

Corridors

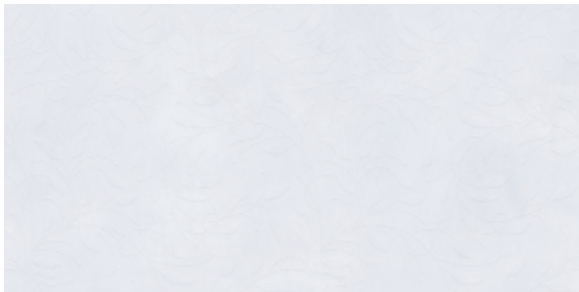




SDM KATIA GREY DK



SDF KATIA GREY FL



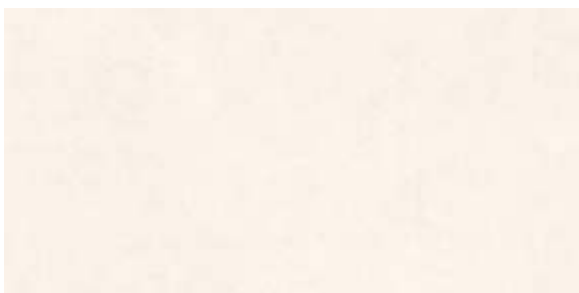
SDM KATIA GREY LT



SDG CALLISTO BEIGE



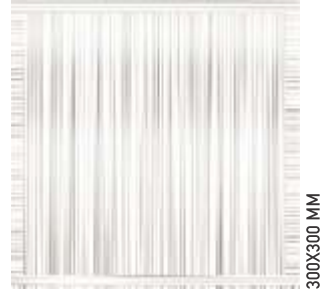
SDM CALLISTO BEIGE FL



SDG CALLISTO CREAMA



SDG YOGURT BIANCO



SDM YOGURT BIANCO FL

Operation Theatres





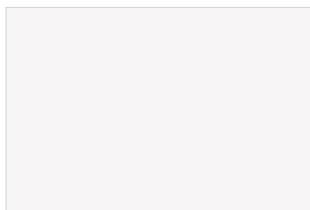
SDG SACRED BLUE DK



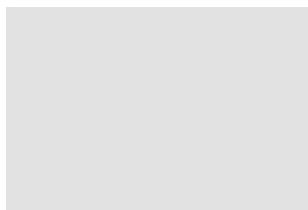
SDM SACRED BLUE FL



SDG SACRED BLUE LT



PLAIN WHITE



SILVER GREY



PLAIN OCEAN BLUE

ICU





SDG HUNKER GREY DK



SDG HUNKER GREY LT

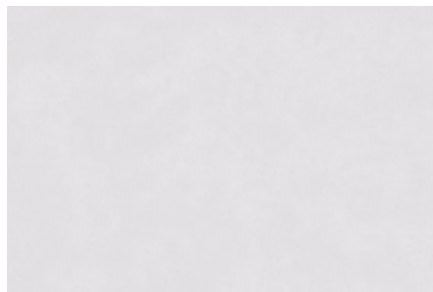


SDM HUNKER GREY FL

300X300 MM



SDM TERRAZZO GREY DK



SDM TERRAZZO GREY LT

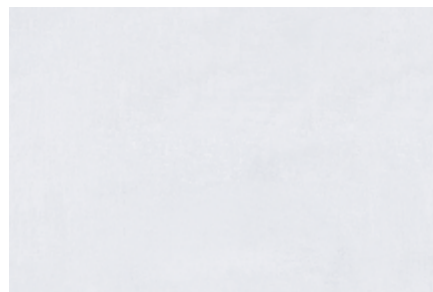


SDM TERRAZZO GREY FL

300X300 MM



SDG MOROCCAN GREY DK



SDG MOROCCAN GREY LT



SDM MOROCCAN GREY FL

300X300 MM



SDG CINZA GREY DK



SDG CINZA GREY LT



SDM CINZA GREY FL

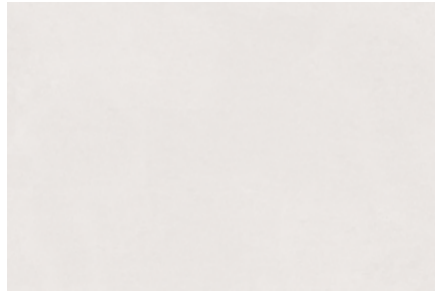
300X300 MM

Nursing Station





SDG FLICKER SANDUNE



SDG FLICKER BEIGE

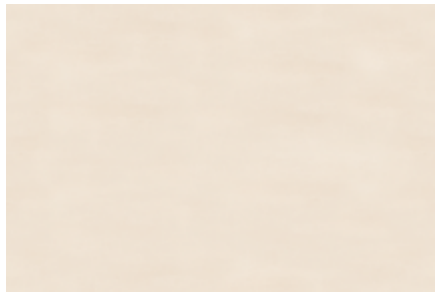


SDM FLICKER SANDUNE FL

300X300 MM



SDM FINE BROWN DK



SDM FINE BROWN LT

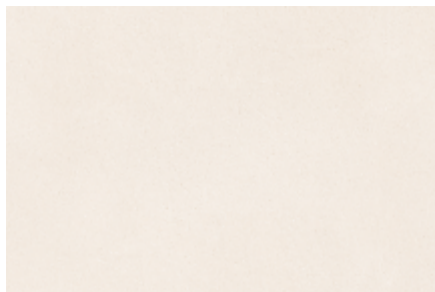


SDM FINE BROWN FL

300X300 MM



SDG MOROCCAN BEIGE DK



SDG MOROCCAN BEIGE LT



SDM MOROCCAN BEIGE DK FL

300X300 MM



SDG PARADISE BEIGE DK



SDG PARADISE BEIGE LT



SDM PARADISE BEIGE FL

300X300 MM

Mother and Child Space





SDM ARGO GREY DK



SDF ARGO GREY FL



SDM ARGO GREY LT



SDG ELIAS GRIS DK



SDM ELIAS GRIS FL



SDG ELIAS GRIS LT



SDM ARENA SANDUNE DK



SDF ARENA SANDUNE FL



SDM ARENA SANDUNE LT



SDG LINEAS GREY



SDM LINEAS GREY FL



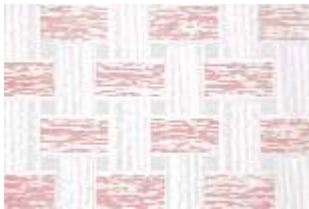
CRAFT BEIGE



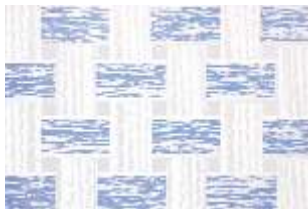
CRAFT GREY



CRAFT GREEN



CRAFT PINK



CRAFT BLUE



PICASSO BLUE



CREEP BLUE



PICASSO PINK

Medical Laboratory and Research





SDG MARRAKESH WHITE



SDM MARRAKESH WHITE FL



SDG YOGURT BIANCO



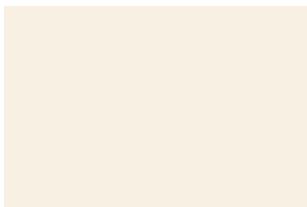
SDM YOGURT BIANCO FL



SDG LINEAS GREY



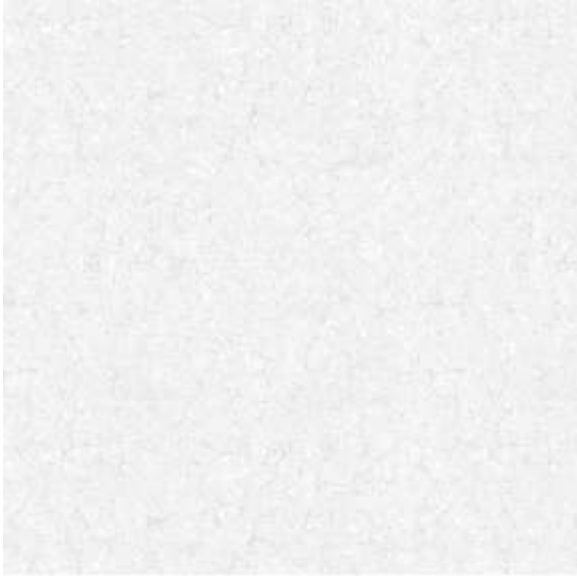
SDM LINEAS GREY FL



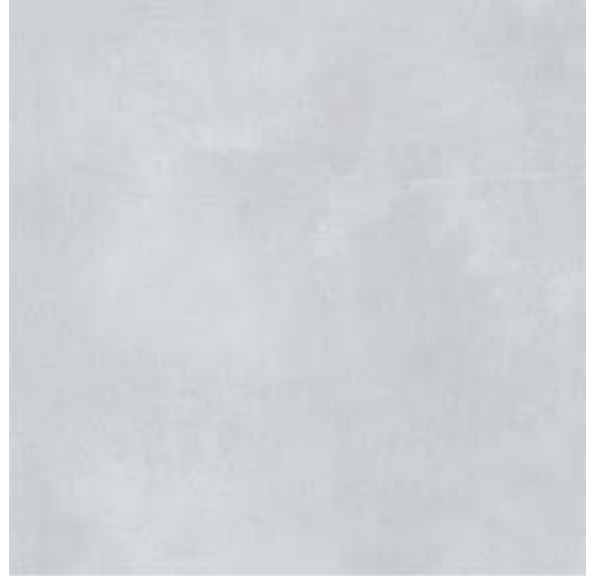
PLAIN IVORY

Hospital Corridor GVT Floor Tiles





PGVT PAPER SNOW



DGVT CEMENTO SKY



DGVT MARCO BROWN



DGVT CEMENTO GRIS



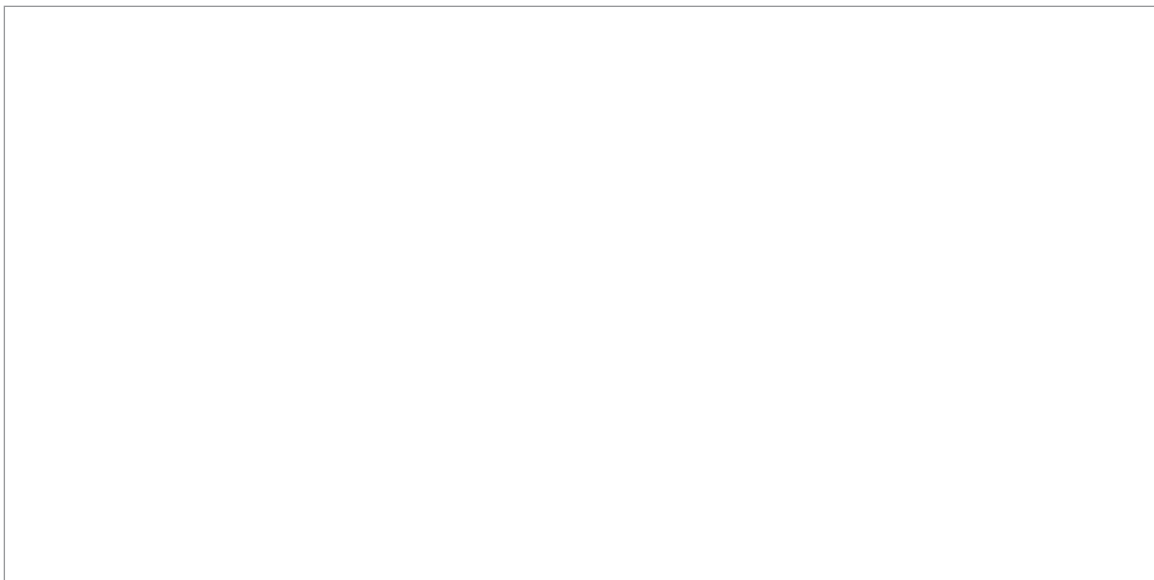
PGVT AUTHENTIC CREAMA



PGVT EMPERADOR GOLDEN BEIGE



ROCKER FLAKES GREY STONE



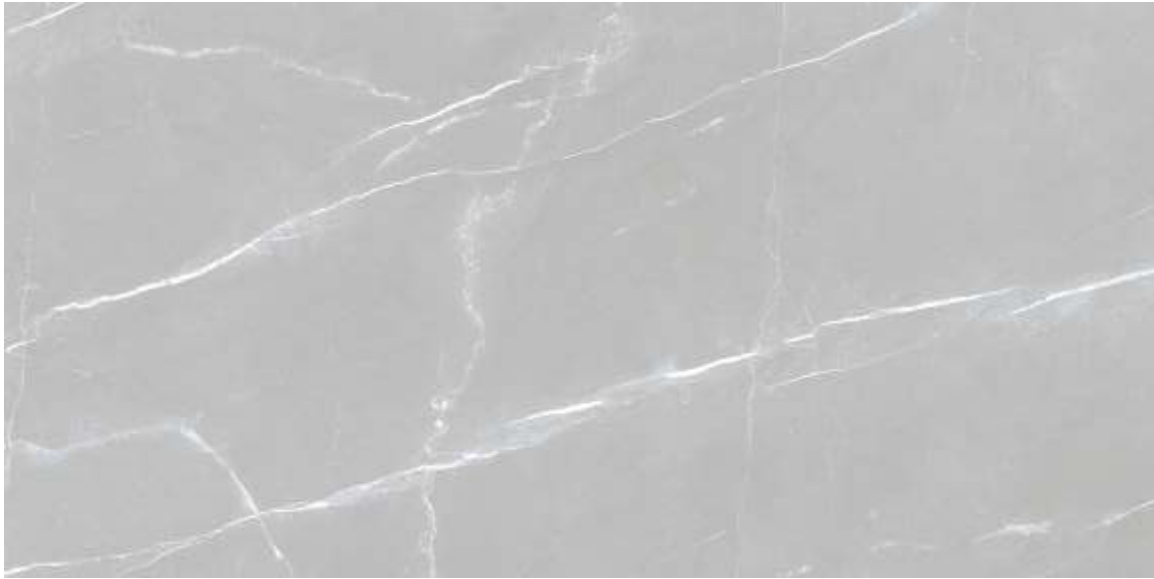
PGVT SUPER WHITE



DGMT TASSERO BROWN



DGMT TASSERO GREY




PGVT ARMANI GREY MARBLE

TECHNICAL SPECIFICATIONS Glazed Vitrified Tiles

Packing Details

Size (In mm.)	No. of Tiles Per Carton	Covered Area Per Carton	
		(In Sq. Mtr.)	(In Sq. ft.)
600X600 (West Zone)	4	1.44	15.5
600X1200 (West Zone)	2	1.44	15.5

Group B Ia as per ISO 13006:2012 and Group B Ib as per IS 15622:2017

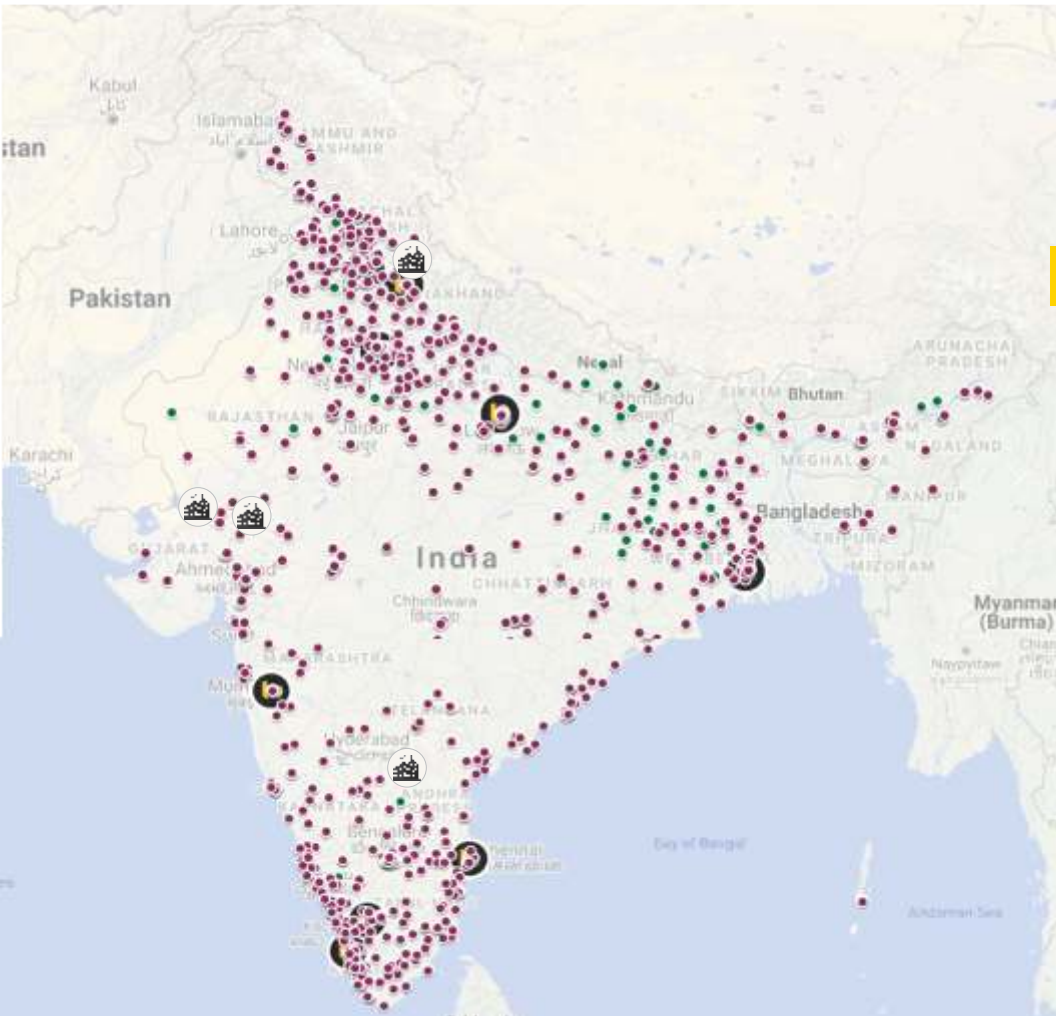
Characteristics	Test Methods	Requirement as per ISO 13006 ≤ 0.5 Group B Ia	Requirement as per IS 15622:2017 0.08<E ≤ 3% Group B Ib		OBL Norms
			Unrectified	Rectified	
Dimension & Surface Quality	IS 13630 (Part 1):2006				
Deviation in Length & Width		±0.6%	± 0.4%	± 0.1 %	± 0.1 %
Deviation in Thickness		±5%	± 5.0 %		± 4 %
Straightness of Sides		±0.5%	± 0.3 %	± 0.1 %	± 0.1 %
Rectangularity		±0.5%	± 0.3 %	± 0.1 %	± 0.1 %
Surface Flatness		±0.5%	± 0.5 %		± 0.2 % 
Surface Quality		Min. 95 % tiles should be free from visible defects	Min. 95 % tiles should be free from visible defects		Conforms
Physical Properties					
Water Absorption	IS 13630 (Part 2):2006	Avg ≤ 0.5, Individual max, 0.6	Avg 0.08<E ≤ 3, Individual 3.3, Max		Avg ≤ 0.5, Individual max, 0.6
Modulus of Rupture in [N/mm ²]	IS 13630 (Part 6):2006	Minimum 35, Individual 32, Min	Avg 30, Individual 27, Min		Avg 38 Min, Individual 35, Min 
Breaking Strength in N	IS 13630 (Part 6):2006	< 7.5 mm thickness: 700, Min ≥ 7.5 mm thickness: 1300, Min	< 7.5 mm thickness: 700, Min ≥ 7.5 mm thickness: 1100, Min		1500, Min 
Moisture Expansion in mm/m	IS 13630 (Part 3):2006	Declare Value	0.02, Max		< 0.02
Scratch Hardness of Surface (Moh's Scale)	IS 13630 (Part 13):2006	NA	5, Min		5 to 8 Depending on Design/Surface 
Resistance to Surface Abrasion of Glazed Tiles (Class I to V)	IS 13630 (Part 11):2006	Test Method Available	Class II, Min		Class-III to Class-V Depending as per Design / Surface
Co-efficient of Linear Thermal Expansion from Ambient Temperature to 100°C	IS 13630 (Part 4):2006	Test Method Available	7x10 ⁻⁶ K ⁻¹ , Max		Conforms
Thermal Shock Resistance	IS 13630 (Part 5):2006	Test Method Available	10 cycles, Min		Passed
Crazing Resistance	IS 13630 (Part 9):2006	Test Method Available	4 Cycles@7.5 bar, Min		4 Cycle @ 7.5 Bar Min 
Frost Resistance	IS 13630 (Part 10):2006	Required	Required		Resistance
Bulk Density, in (g/cc)	IS 13630 (Part 12):2006	NA	2.0, Min		> 2.1
Impact Resistance- Coefficient of Restitution	IS 13630 (Part 14):2006	Manufacturer to State	0.55, Min		0.7-0.85
Chemical Properties					
Resistance to Staining of Glazed Tiles	IS 13630 (Part 8):2006	Min, Class 3	Class I, Min		Conforms
Resistance to Household Chemicals		Min, GA	Class AA, Min		Conforms
Resistance to Acids and Alkalis (with exception of hydrofluoric acid and its compounds)		Test Method Available	Required, if agreed		Conforms

TECHNICAL SPECIFICATIONS Ceramic Tiles

Packing Details		
Size	No. of Tiles Per Carton	Covered Area Per Carton
(In mm.)		(In Sq. Mtr.)
300X600 (Wall Tiles)	5	0.90
300X450 (Wall Tiles)	6	0.81
200X300 (Wall Tiles)	15	0.90
300X300 (Floor Tiles)	9	0.81

(E > 10 % Group B III) as per IS 15622:2017				
Characteristics	Standard Test Method	IS 15622:2017 E > 10 % (Group B III)		OBL Norms
		Unrectified	Rectified	
Dimension & Surface Quality				
Deviation in Length & Width	IS 13630 (Part 1):2017	± 0.4%	± 0.2 %	Conforms
Deviation in Thickness		± 5.0 %		± 4.00 %
Straightness of Sides		± 0.2 %	± 0.15 %	Conforms
Rectangularity		± 0.3 %	± 0.2 %	Conforms
Surface Flatness		± 0.3 %		± 0.20 % 😊😊
Surface Quality		Min. 95 % tiles should be free from visible defects		Min. 95 % tiles should be free from visible defects 😊
Physical Properties				
Water Absorption (%)	IS 13630 (Part 2):2017	Average > 10 %		17±2 % 😊
Modulus of Rupture in [N/mm ²]	IS 13630 (Part 6):2017	Min 15, for thickness < 7.5 mm Min 12, for thickness ≥ 7.5 mm		>15 😊
Breaking Strength in N		< 7.5 mm thickness: 200, Min ≥ 7.5 mm thickness: 600, Min		Conforms 😊
Moisture Expansion in mm/m	IS 13630 (Part 3):2017	0.04, Max		Conforms
Scratch Hardness of Surface (Moh's Scale)	IS 13630 (Part 13):2017	3, Min		3
Resistance to Surface Abrasion of glazed tiles (Class I to V)	IS 13630 (Part 11):2017	Class II, Min		Conforms
Co-efficient of Linear Thermal Expansion from ambient temperature to 100°C	IS 13630 (Part 4):2017	9x10 ⁻⁶ K ⁻¹ , Max		Conforms
Thermal Shock Resistance	IS 13630 (Part 5):2017	10 cycles, Min		Passed 10 Cycle
Crazing Resistance Glazed Tiles	IS 13630 (Part 9):2017	4 Cycles@7.5 bar, Min		4 Cycle Passed 😊😊
Impact Resistance- Coefficient of Restitution	IS 13630 (Part 14):2017	0.55, Min		>0.55
Chemical Properties				
Resistance to staining of glazed tiles	IS 13630 (Part 8):2017	Class I, Min		Conforms
Resistance to household chemicals		Class AA, Min		Conforms
Resistance to acids and alkalis (with exception of hydrofluoric acid and its compound)		Required, if agreed		Class AA





NOTE: Certain amount of Size and Shade variation is inherent in all ceramic products. Colours shown in this catalog are as accurate as the limitations of the printing process will allow. Prospective customers are advised to inspect a sample of the tile before ordering. Every effort has been made to ensure the accuracy of the information given. However, the company reserves the right to change the specification before prior notice. Sometimes variations in shade or size being inherent to ceramic industry may occur. It is suggested to check the tiles before purchasing and laying as the company does not accept the responsibility once the tiles are laid.



A Network of

2500+

Channel Partners

-  Franchise Owned Boutiques
-  Channel Partners
-  Company Owned Boutiques
-  Plants

ORIENT BELL TILE BOUTIQUE

CHANDIGARH

SCO - 6, First Floor, Sector 7-C, Madhya Marg, Chandigarh-160 019,
Tel.: +91 172 4624 342

CHENNAI

New No: 85, Old No: 30, Maharaja Tower, 2nd Floor, 1st Avenue,
Ashok Nagar, (Above Kotak Mahindra Bank), Chennai-600 083,
Tel.: +91 44 4213 8687

COCHIN

"SURYA GAYATRI", Building No. 32/8, B3, Puthiya Road, New Junction, (Opposite
Holiday Inn Hotel) Ernakulam By Pass Road, Cochin-682 031
Tel.: +91 97457 68058

COIMBATORE

11, 1st Floor, Venkata Samy Road (East), R.S. Puram,
Coimbatore-641 002,
Tel.: +91 89799 41666

DEHRADUN

Duggal Complex (Near Kamla Palace Hotel), GMS Road,
Dehradun-248 001,
Tel.: +91 97197 01064

KOLKATA

8/1, Burdwan Road, Alipore, Kolkata-700 027,
Tel.: +91 33 4068 4046/7

LUCKNOW

Raj Rani Apartment, Ground Floor, Near Beej Nigam, Badshah Nagar Railway
Station, Lucknow-226 006,
Tel.: +91 99847 86404

NEW DELHI

M-47, GK-II, M Block, New Delhi-110 048,
Tel.: +91 11 4068 7468/69

PUNE

Shop No. 3 and 4, A Tower Vega Centre, C.T.S No. 710, Final Plot No. 401/1,
Shankarasheth Road, Gultekdi, Swargate, Pune-411 037
Tel.: +91 73910 72247

VADODRA DISPLAY CENTRE

78-79, 2nd Floor, Surya Kiran Complex, Beside Banker Heart Institute,
Old Padra Road, Vadodara-390007, Gujarat
Tel.: +91 98254 14113

**Make small spaces
look bigger
with Orientbell tiles**

Big solutions for small bathrooms



orientbell
tiles

 Whataspp : 87507 11111 |

 Missed Call : 87507 33333

Listed on BSE (530365) for 20+ years.
And also on NSE (ORIENTBELL).

CORPORATE OFFICE:

Iris House, 16 Business Centre,
Nangal Raya, New Delhi – 110046, India
Tel: +91-11-47119100

REGISTERED OFFICE:

8 Industrial Area, Sikandrabad – 203 205 (UP), India
Tel: +91-5735-222-203 / 424, +91-8191004575 / 76

CIN: L14101UP1977PLC021546



www.orientbell.com

