A close-up, high-angle photograph of the front left corner of a dark-colored car. The image highlights the side mirror, the headlight assembly with three circular lenses, and the front bumper. The background is dark, making the metallic and plastic surfaces of the car stand out.

MAKING
DRIVE-WAY
STRONGER &
ELEGANT

PRESENTING

SPECIALLY DESIGNED TILES FOR
AUTOMOBILE SHOWROOMS

OBL Awards & Accolades

Realty+ recognizes the best of the best within the ranks of Indian Real Estate



Website of the Year
for www.orientbell.com
(India's construction & design industry)



Integrated Brand Campaign of the Year
for "Chote Bathroom ke Bade Upay"
(India's construction & design industry)



Best Omnichannel Retail Model
Winners Future of Retail Summit & Awards 2020



Customer Retail Journey Innovation
Winners Future of Retail Summit & Awards 2020



CEO with HR Orientation
ZEE BUSINESS
National Human Capital Leadership Congress & Awards

About OBL

Orient Bell Limited (OBL) is amongst the largest manufacturers of Wall and Floor Tiles. Established in 1977, OBL has been a pioneer in the Industry with a focus on customer-centric innovation.

First to manufacture ultra-vitrified tiles, new product designs & development is a continuous process at OBL. As a result it has an extensive range of tiles with various finishes & textures. It has 4 patent-pending technologies: Forever Tiles, GermFree Tiles, Cool Tiles & Life Tiles.

To display extensive range of tiles, we have a chain of signature showrooms. Privileged to be associated with premier architects and construction agencies of the country, it also counts most leading developers as well as government & public sector institutions as its customers.



- The ISO 9001:2015 accreditation for our quality control management systems reflects the quest for manufacturing international standard products.
- In 2015 our Sikandarabad plant was awarded with prestigious ISI certification for its products.
- In May 2000, OBL was awarded ISO 14001 certification by the internationally recognised BSI Management Systems, UK.
- Our manufacturing units are ISO 14001:2015 certified, the most complete and global expression for an environment friendly industrial company.
- We have been awarded OHSAS 18001 Certification for Health & Safety Standards. No waste water is ever discharged from our factory.
- We were also awarded with "Certificate Of Merit" in 'National Energy Conservation Award' 2016 organised by Ministry of Power for saving Power and Fuel consumption.



Listed on BSE (530365) for 20+ years.
And also on NSE (ORIENTBELL).


EXCLUSIVE TILES FOR AUTOMOBILE INDUSTRIES

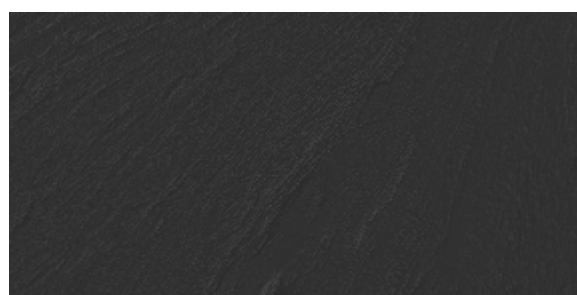
300x600mm



RECEPTION AREA



300x600 mm
 Shown tile is Matte



300x600mm |
DGVT NEXA CUFF BLACK

EXCLUSIVE TILES FOR AUTOMOBILE INDUSTRIES

WORKSHOP AREA

300x300mm | 200x300mm



300x300 mm
200x300mm
Shown tiles are Matte



300x300mm |
ODM NEXA SUPREME WHITE



200x300mm |
NEXA LACQUER GREY

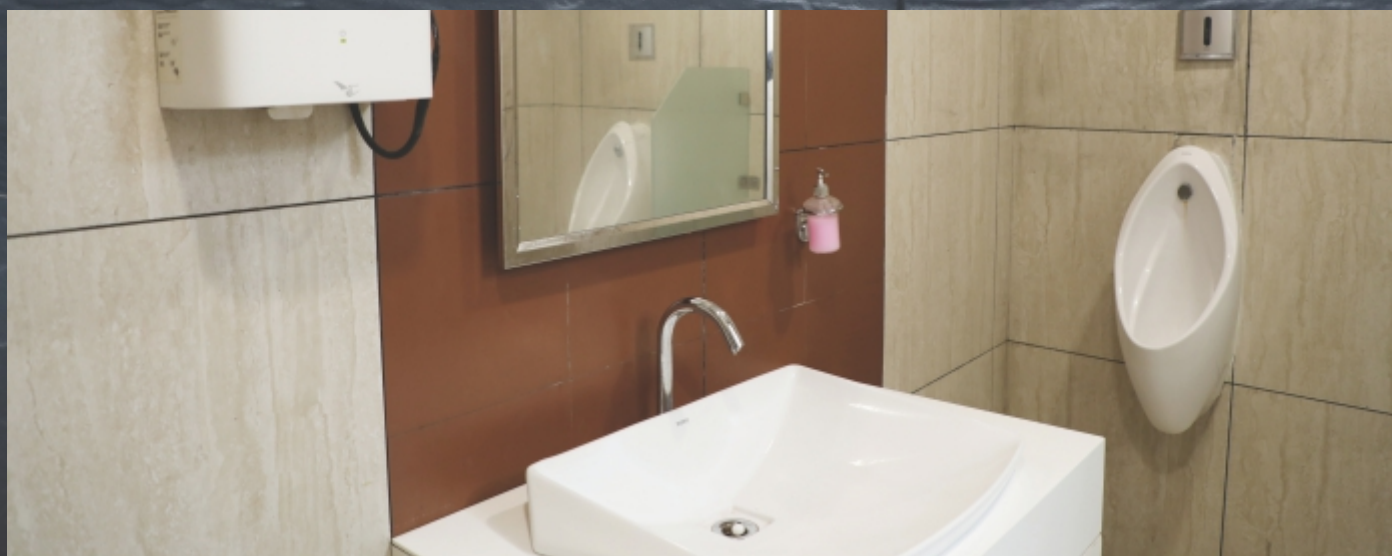
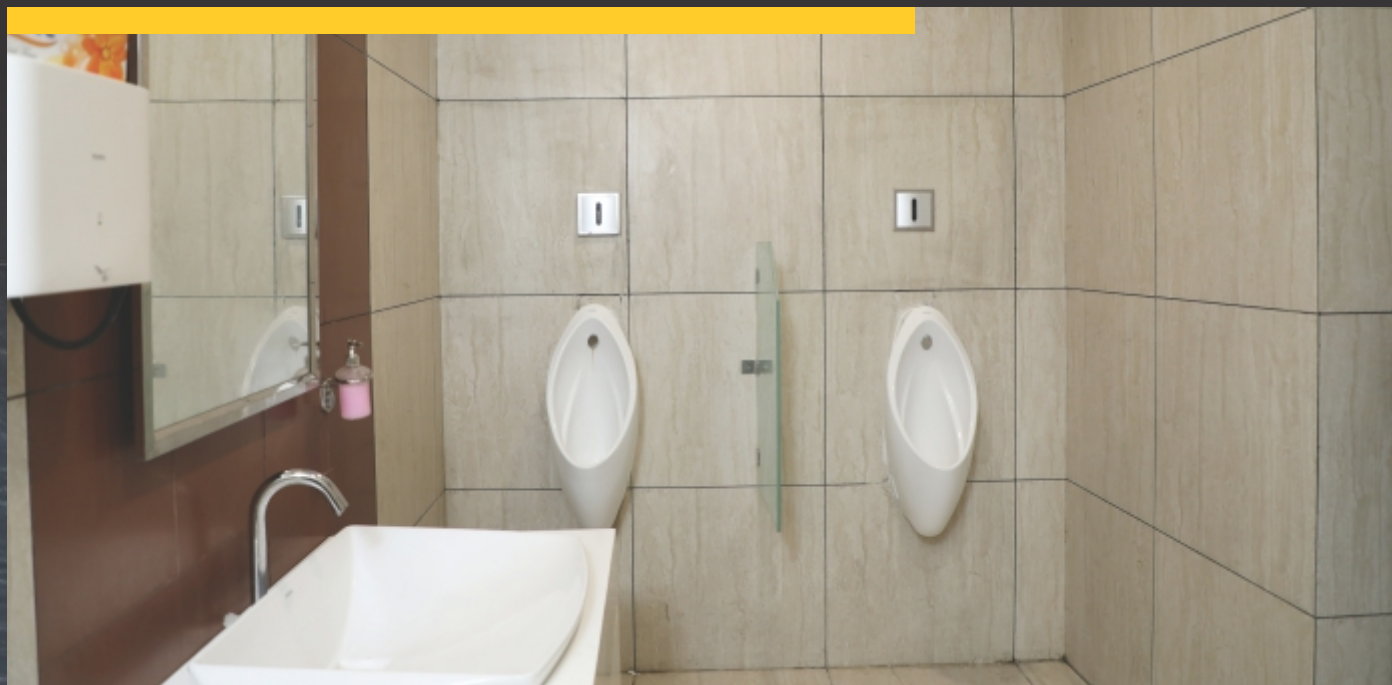
WAITING AREA



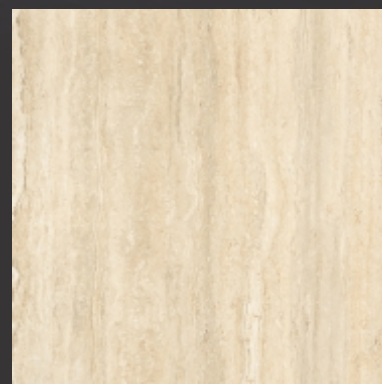
EXCLUSIVE TILES FOR AUTOMOBILE INDUSTRIES

WASHROOM AREA

600x600mm | 300x300mm



600x600 mm |
NEXA OXFORD BROWN



600x600mm |
DGVT NEXA TRAVERTINE

600x600 mm



Shown tiles are Matte

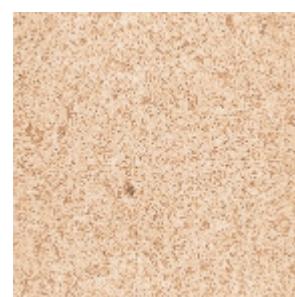
KITCHEN AREA



300x300 mm



Shown tile is Matte



300x300mm |
NEXA PIERNA MARFIL

EXCLUSIVE TILES FOR AUTOMOBILE INDUSTRIES

600x1200mm | 600x600mm

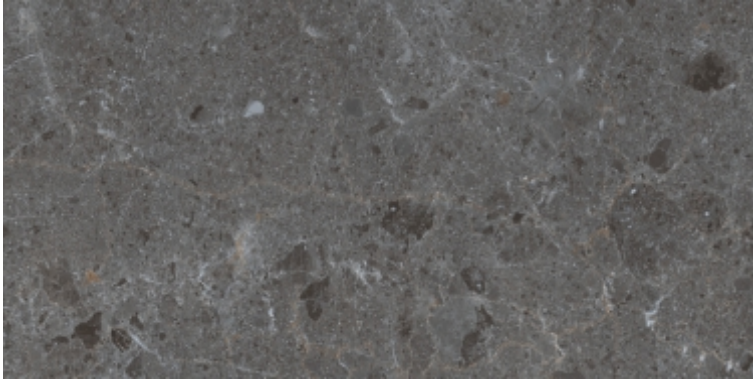


Preview Shown: SUPER GLOSS TORONTO MARBLE

SUPER GLOSS TILES

A perfect amalgamation of strength and appeal brought about by state-of-art technology is the simplistic description of these new range of tiles by OBL. Designed with special glaze, bringing out high gloss, these tiles will be catalysts to provide a rich edge to your product. With our R&D being our core competency at OBL, we have tried our best to deliver a wide range of designs, carrying some unique advantages as, low porosity, water resistant, acid and alkali resistance, frost resistance and high breaking strength. Their easy to clean feature is an added advantage, making it absolutely effortless to remove even the steadiest or marks like grease and oil. The overall mirror like finish with bright colour appearance is sure to add panache to your otherwise subtle and elegant surrounding, complimenting the curves of your most precious range, without actually overpowering it.

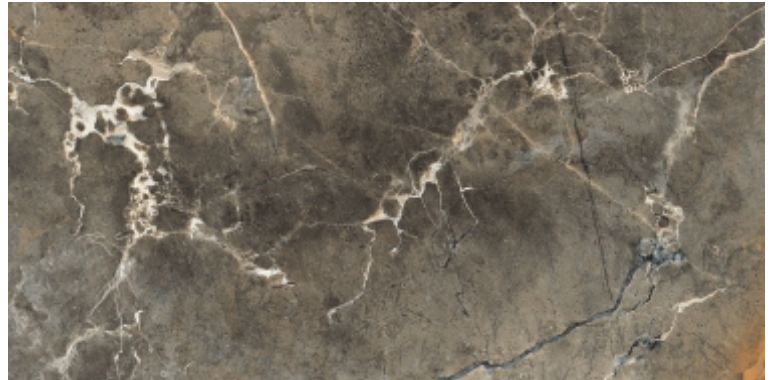
TILES FOR SHOWROOM



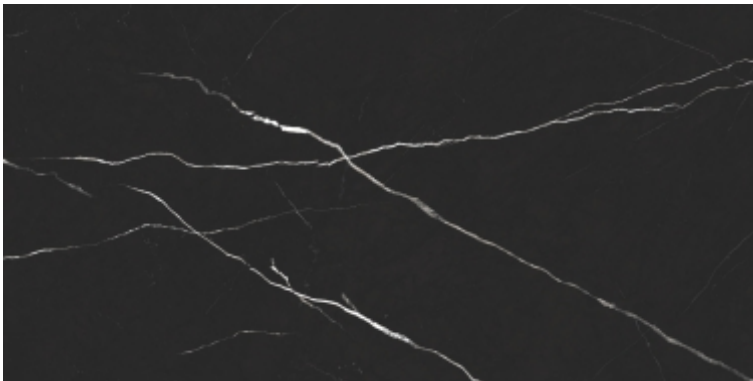
600x1200mm |
SUPER GLOSS ARCTIC BLACK

G3
F4
R3

600x1200mm |
SUPER GLOSS TORONTO MARBLE

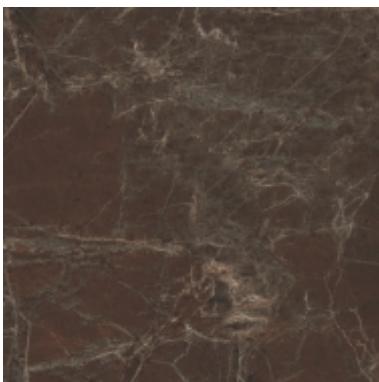


G3
F4
R3



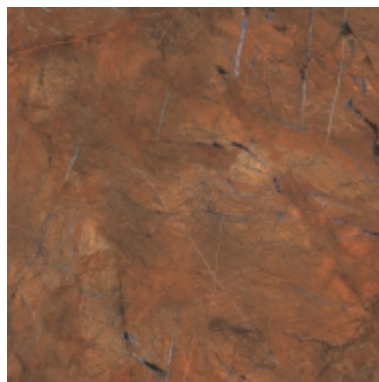
600x1200mm |
SUPER GLOSS MARQUINA BLACK

G3
F4
R4



G3
F4
R3

600x600mm |
SUPER GLOSS TAURUS BROWN



G3
F4
R3

600x600mm |
SUPER GLOSS MYSTIC BROWN



G3
F4
R3

600x600mm |
SUPER GLOSS RAINFOREST

EXCLUSIVE TILES FOR AUTOMOBILE INDUSTRIES

600x600mm



Preview Shown: SAHARA CREAMA

TILES FOR SHOWROOM



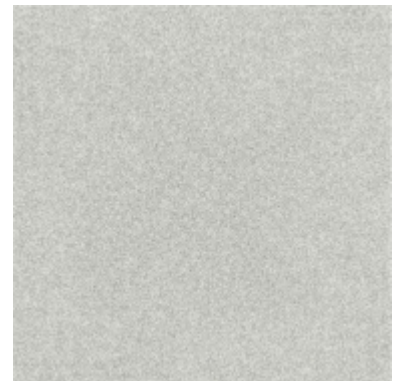
G5
F1
R1

600x600mm | SAHARA BEIGE



G5
F1
R1

600x600mm | SAHARA CREAMA



G5
F1
R1

600x600mm | SAHARA GRIS

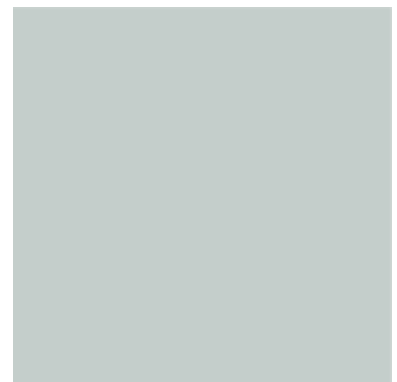


Preview Shown: SAHARA BEIGE



G5
F1
R1

600x600mm | SAHARA NERO



G5
F1
R1

600x600mm | SAHARA P KOTA GREEN



G5
F1
R1

600x600mm | SAHARA SLATE P KOTA GREEN

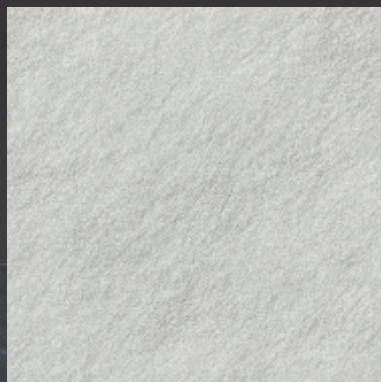
600x600 mm



Shown tiles are Matte

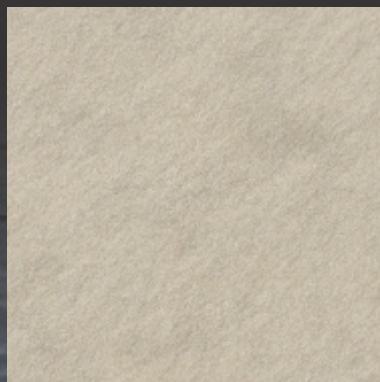
EXCLUSIVE TILES FOR AUTOMOBILE INDUSTRIES

600x600mm



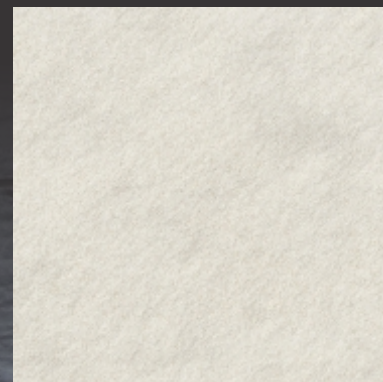
G5
F1
R1

600x600mm |
SAHARA ROCK GRIS



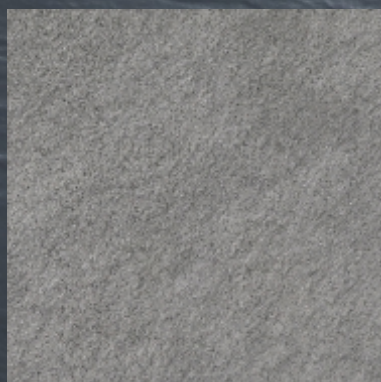
G5
F1
R1

600x600mm |
SAHARA ROCK BEIGE



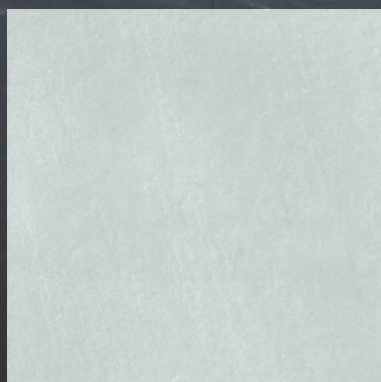
G5
F1
R1

600x600mm |
SAHARA ROCK CREAMA



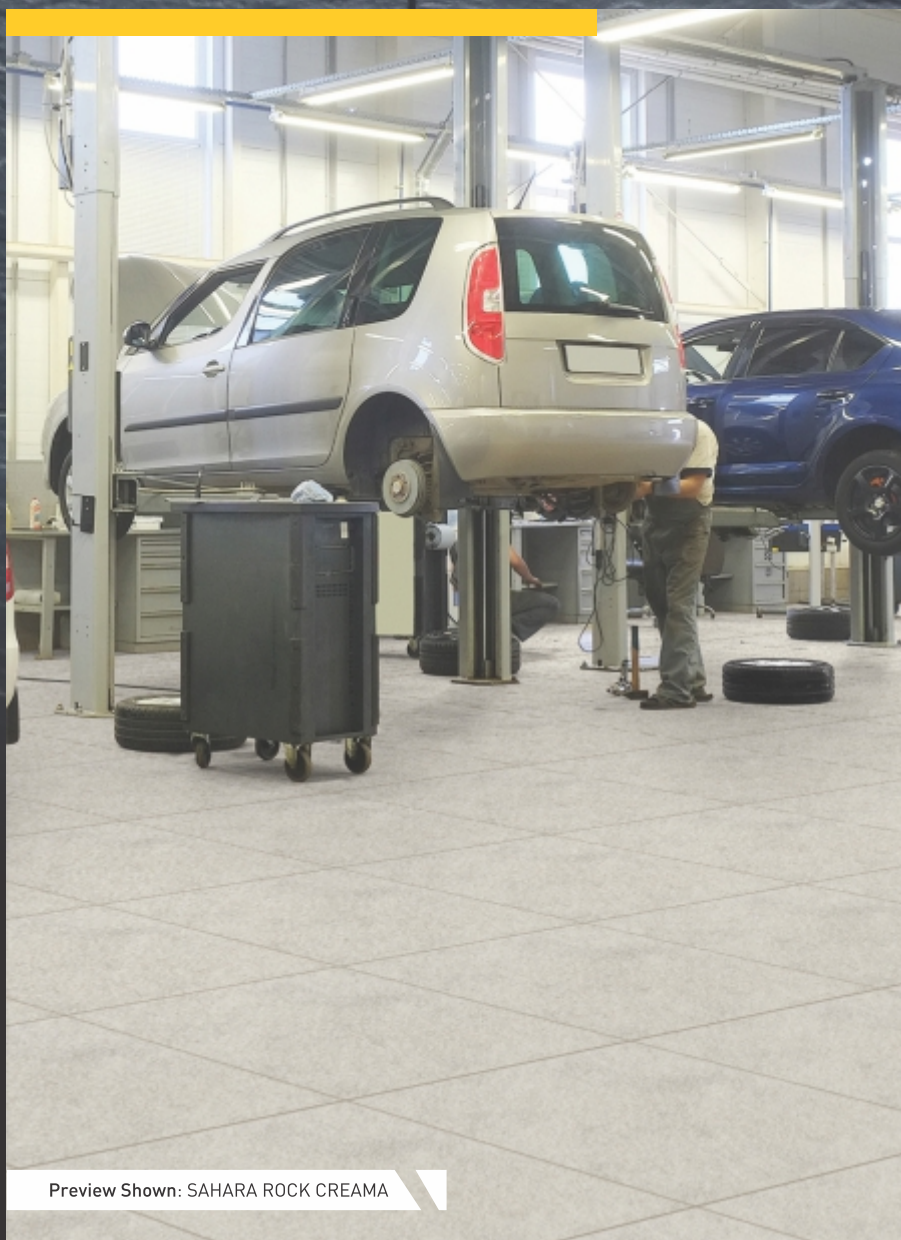
G5
F1
R1

600x600mm |
SAHARA ROCK NERO



G5
F1
R1

600x600mm |
SAHARA ROCK P KOTA GREEN



Preview Shown: SAHARA ROCK CREAMA

600x600 mm



Shown tiles are Matte

TILES FOR SHOWROOM



G5
F1
R1

600x600mm | SAHARA HEAVY ROCK BEIGE



G5
F1
R1

600x600mm | SAHARA HEAVY ROCK CREAMA



G5
F1
R1

600x600mm | SAHARA HEAVY ROCK GRIS

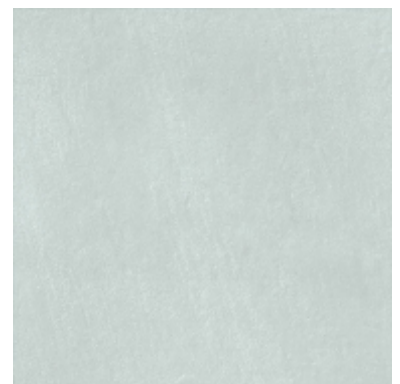


15.5 mm
Extra Thickness
for Extra
Strength



G5
F1
R1

600x600mm | SAHARA HEAVY ROCK NERO



G5
F1
R1

600x600mm | SAHARA HEAVY ROCK P KOTA GREEN



G5
F1
R1

600x600mm | SAHARA HEAVY SLATE P KOTA GREEN

600x600 mm



Shown tiles are Matte

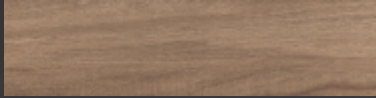
EXCLUSIVE TILES FOR AUTOMOBILE INDUSTRIES

145x600mm | 600x600mm



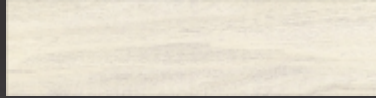
G5
F4
R3

145x600mm |
DGV T ARIZON WOOD



G5
F4
R3

145x600mm |
DGV T POPLAR SANDUNE



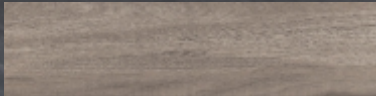
G5
F4
R3

145x600mm |
DGV T POPLAR BEIGE



G5
F4
R3

145x600mm |
DGV T POPLAR BROWN



G5
F4
R3

145x600mm |
DGV T POPLAR WENGE

145x600 mm
Shown tiles are Matte



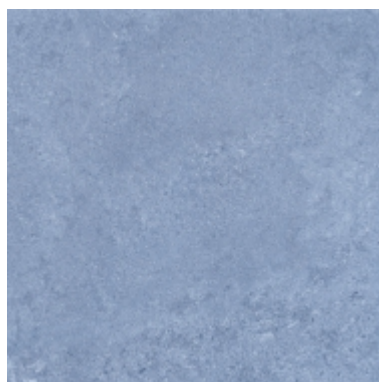
Preview Shown: DGV T POPLAR WENGE

FOREVER & GERMFREE TILES



G5
F4
R3

600x600mm |
GFT BDF CEMENTO LT BLUE



G5
F4
R3

600x600mm |
GFT BDF CEMENTO DK BLUE



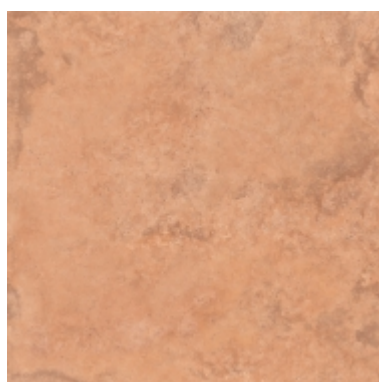
G5
F2
R2

600x600mm |
GFT FT BLENDA GREY



G5
F4
R4

600x600mm |
GFT BDF MODERN SLATE CHARCOAL



G5
F4
R4

600x600mm |
GFT BDF RUSTIC NATURAL BROWN



G5
F2
R2

600x600mm |
GFT FT ADAMS BROWN



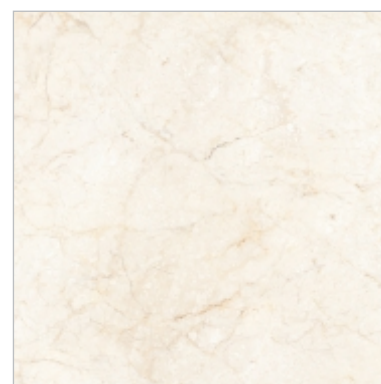
G5
F4
R3

600x600mm |
GFT FT BAMBO



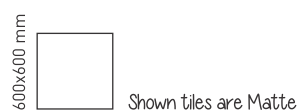
G5
F4
R3

600x600mm |
GFT FT ANDES BROWN



G5
F4
R4

600x600mm |
GFT FT MORRIS CREMA



EXCLUSIVE TILES FOR AUTOMOBILE INDUSTRIES

195x1200mm



G5
F5
R4

195x1200mm |
DGVT ARIZON WOOD JUMBO



G5
F4
R3

195x1200mm |
PLANK WENGE



G5
F6
R4

195x1200mm |
PLANK OAK SILVER



G5
F4
R3

195x1200mm |
PLANK CHESTNUT NATURAL



G5
F6
R4

195x1200mm |
PLANK OAK SMOKED



G5
F5
R4

195x1200mm |
PLANK OAK SMOKED MOCCA



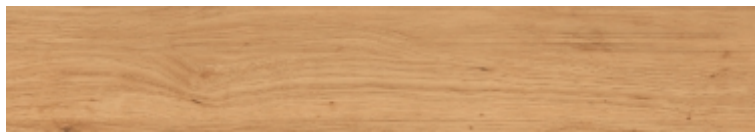
Shown tiles are Matte

TILES FOR SHOWROOM



G5
F6
R4

195x1200mm |
DGVT LUMBER WHITE ASH WOOD



G5
F6
R4

195x1200mm |
DGVT VENEZIA OAK WOOD



G5
F6
R4

195x1200mm |
DGVT PALDAO WOOD BEIGE



G5
F6
R4

195x1200mm |
DGVT CHESTNUT OAK WOOD



G5
F6
R4

195x1200mm |
DGVT VENEER TEAK WOOD



G5
F6
R4

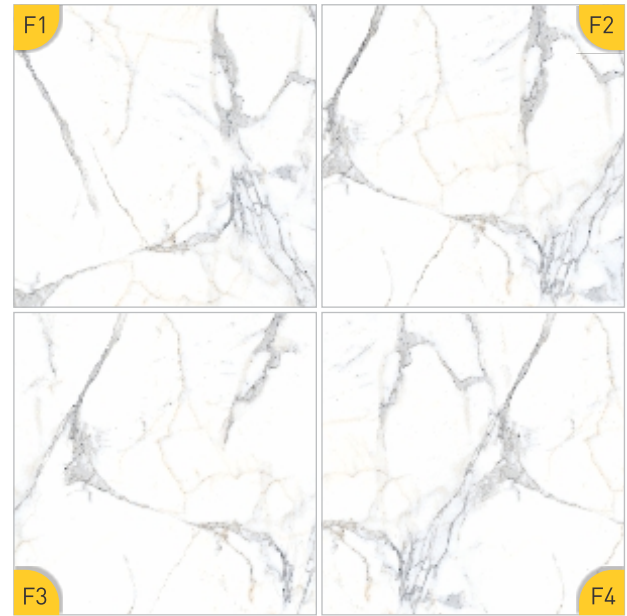
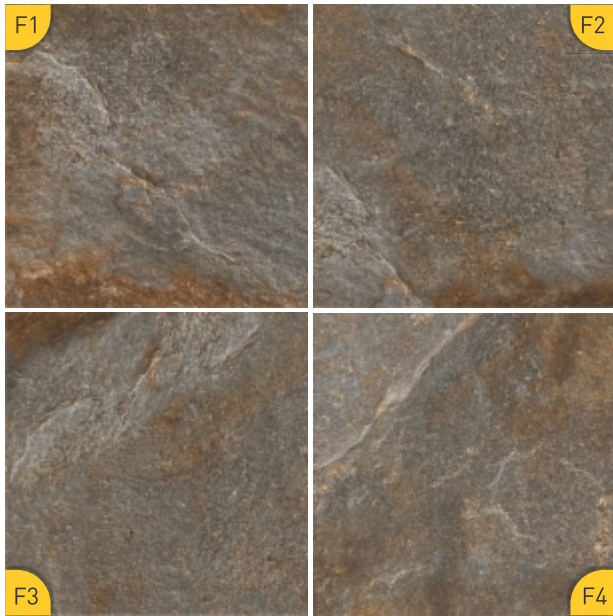
195x1200mm |
DGVT PACIFIC PINE WOOD BROWN

Shown tiles are Matte



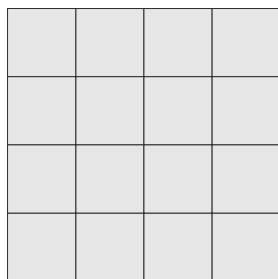
195x1200 mm

Tile Design & Faces

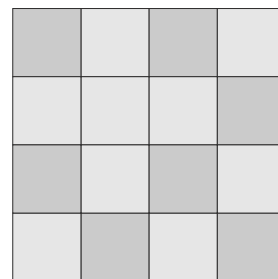


Faces of a tile are the design on each tile crafted using different grains and textures, creating a pattern. Most of tile designs has a set of 4 or 6 tiles with different faces.

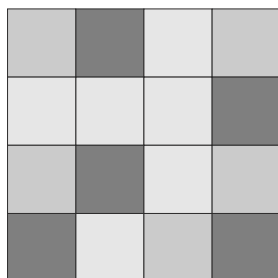
Tile Randomness/Variation



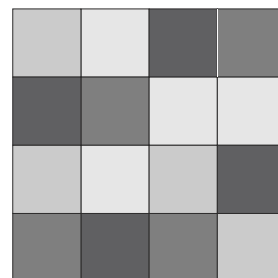
R1-No Variation



R2-Slight Variation



R3-More Variation



R4-Most Variation

Randomness of a tile is the variation in design on different faces of tile. It varies for each tile design from minimal to high variation.






TECHNICAL SPECIFICATIONS

Glazed Vitrified Tiles

Packing Details

Size (In mm.)	No. of Tiles Per Carton	Covered Area Per Carton	
		(In Sq. Mtr.)	(In Sq. ft.)
600X1200 (SKD)	2	1.44	15.5
195X1200 (SKD)	4	0.94	10.11
600X600 (SKD)	4	1.44	15.5
145X600 (SKD)	8	0.70	7.50

Group B Ia as per ISO 13006:2012 and Group B Ib as per IS 15622:2017

Characteristics	Test Methods	Requirement as per ISO 13006 ≤ 0.5 Group B Ia	Requirement as per IS 15622:2017 0.08<E ≤ 3% Group B Ib		OBL Norms
			Unrectified	Rectified	
Dimension & Surface Quality	IS 13630 (Part 1):2006				
Deviation in Length & Width		±0.6%	± 0.4%	± 0.1 %	± 0.1 %
Deviation in Thickness		±5%	± 5.0 %		± 4 %
Straightness of Sides		±0.5%	± 0.3 %	± 0.1 %	± 0.1 %
Rectangularity		±0.5%	± 0.3 %	± 0.1 %	± 0.1 %
Surface Flatness		±0.5%	± 0.5 %		± 0.2 % 
Surface Quality		Min. 95 % tiles should be free from visible defects	Min. 95 % tiles should be free from visible defects		Conforms
Physical Properties					
Water Absorption	IS 13630 (Part 2):2006	Avg ≤ 0.5, Individual max, 0.6	Avg 0.08<E ≤ 3, Individual 3.3, Max		Avg ≤ 0.5, Individual max, 0.6
Modulus of Rupture in [N/mm ²]	IS 13630 (Part 6):2006	Minimum 35, Individual 32, Min	Avg 30, Individual 27, Min		Avg 38 Min, Individual 35, Min 
Breaking Strength in N	IS 13630 (Part 6):2006	< 7.5 mm thickness: 700, Min ≥ 7.5 mm thickness: 1300, Min	< 7.5 mm thickness: 700, Min ≥ 7.5 mm thickness: 1100, Min		1500 Min 
Moisture Expansion in mm/m	IS 13630 (Part 3):2006	Declare Value	0.02, Max		< 0.02
Scratch Hardness of Surface (Moh's Scale)	IS 13630 (Part 13):2006	NA	5, Min		5 to 8 Depending on Design/Surface
Resistance to Surface Abrasion of Glazed Tiles (Class I to V)	IS 13630 (Part 11):2006	Test Method Available	Class II, Min		Class-III to Class-V Depending as per Design / Surface 
Co-efficient of Linear Thermal Expansion from ambient temperature to 100°C	IS 13630 (Part 4):2006	Test Method Available	7x10 ⁻⁶ K ⁻¹ , Max		Conforms
Thermal Shock Resistance	IS 13630 (Part 5):2006	Test Method Available	10 cycles, Min		Passed
Crazing Resistance	IS 13630 (Part 9):2006	Test Method Available	4 Cycles@7.5 bar, Min		4 Cycle @ 7.5 Bar Min 
Frost Resistance	IS 13630 (Part 10):2006	Required	Required		Resistance
Bulk Density, in (g/cc)	IS 13630 (Part 12):2006	NA	2.0, Min		> 2.1
Impact Resistance-Coefficient of Restitution	IS 13630 (Part 14):2006	Manufacturer to State	0.55, Min		0.7-0.85
Chemical Properties					
Resistance to Staining of Glazed Tiles	IS 13630 (Part 8):2006	Min, Class 3	Class I, Min		Conforms
Resistance to Household Chemicals		Min, GA	Class AA, Min		Conforms
Resistance to Acids and Alkalis (with exception of hydrofluoric acid and its compounds)		Test Method Available	Required, if agreed		Conforms

TECHNICAL SPECIFICATIONS

Heavy Full Body Vitrified Tiles

Packing Details			
Size	No. of Tiles	Covered Area Per Carton	
(In mm.)	Per Carton	(In Sq. Mtr.)	(In Sq. Ft.)
600x600 (SKD)	4	1.44	15.5

As per Indian Standard (IS 15622:2017) Group B Ia			
Characteristics	Standard Test Method	IS 15622 Requirements	OBL Norms
Dimension & Surface Quality			
Deviation in Length & Width	IS 13630 (Part 1):2006	± 0.1 %	± 0.1 % (Max)
Deviation in Thickness		± 5.0 %	± 3.0 % (Max)
Straightness of Sides		± 0.1 %	± 0.1 % (Max)
Rectangularity		± 0.1 %	± 0.1 % (Max)
Surface Flatness		± 0.5 %	± 0.2 % (Max) ☺☺
Surface Quality		Min 95% of the tiles shall be free from visible defects that would impair the appear of a major area of the tile	Conform
Physical Properties			
Water Absorption %	IS 13630 Part 2	Avg ≤ 0.08%, Individual 0.10% Max	Avg ≤ 0.08% ☺
Modulus of Rupture N/mm ²	IS 13630 Part 6	Avg 35, Individual 32 Min	Min 45 N/mm ² ☺☺
Breaking Strength N	IS 13630 Part 6	700 Min for thickness < 7.5mm, 1300 Min for thickness ≥ 7.5 mm	Min 2000 N ☺☺
Moisture Expansion	IS 13630 Part 3	0.02 Max	Conforms
Scratch Hardness (Moh's Scale)	IS 13630 Part 13	5 Min	7 Min ☺☺
Resistance to Surface Abrasion of Glazed Tiles Class I to V (Applicable for floor applications only)	IS 13630 Part 11	Min II	Class V ☺
Linear Thermal Expansion Co-efficient	IS 13630 Part 4	6x10 ⁻⁶ , Max	6x10 ⁻⁶ , Max
Thermal Shock Resistance	IS 13630 Part 5	10 Cycles, Min	Passed
Impact Resistance	IS 13630 Part 14	0.55, Min	0.75
Coefficient of Friction	ISO 10545 Part 17	Manufacturer to declare value where required	R-11 in Pendulum test method
Frost Resistance	IS 13630 Part 10	Required if agreed between manufacturer and purchaser	50 Cycle Passed
Resistance to deep abrasion of unglazed tiles	IS 13630 Part 12	140, Max	Class AA
Bulk Density g/cc	IS 13630 Part 2	2.2, Min	2.2, Min
Chemical Properties			
Resistance to Staining of Glazed Tiles	IS 13630 Part 8	Class 1 Min	Class 1
Resistance to Household Chemicals		Class AA	Class AA
Resistance to Acids and Alkalis (with exception of hydrofluoric acid and its compounds)		Class AA	Class AA

TECHNICAL SPECIFICATIONS

Full Body Vitrified Tiles

Packing Details			
Size	No. of Tiles	Covered Area Per Carton	
(In mm.)	Per Carton	(In Sq. Mtr.)	(In Sq. Ft.)
600x600 (SKD)	4	1.44	15.5

As per Indian Standard (IS 15622:2017) Group B Ia			
Characteristics	Standard Test Method	IS 15622 Requirements	OBL Norms
Dimension & Surface Quality			
Deviation in Length & Width	IS 13630 (Part 1):2006	± 0.1 %	± 0.1 % (Max)
Deviation in Thickness		± 5.0 %	± 3.0 % (Max)
Straightness of Sides		± 0.1 %	± 0.1 % (Max)
Rectangularity		± 0.1 %	± 0.1 % (Max)
Surface Flatness		± 0.5 %	± 0.2 % (Max) ☺☺
Surface Quality		Min 95% of the tiles shall be free from visible defects that would impair the appear of a major area of the tile	Conform
Physical Properties			
Water Absorption %	IS 13630 Part 2	Avg ≤ 0.08%, Individual 0.10% Max	Avg ≤ 0.08% ☺
Modulus of Rupture N/mm ²	IS 13630 Part 6	Avg 35, Individual 32 Min	Min 45 N/mm ² ☺☺
Breaking Strength N	IS 13630 Part 6	700 Min for thickness < 7.5mm, 1300 Min for thickness ≥ 7.5 mm	Min 6250 N ☺☺
Moisture Expansion	IS 13630 Part 3	0.02 Max	Conforms
Scratch Hardness (Moh's Scale)	IS 13630 Part 13	5 Min	7 Min ☺☺
Resistance to Surface Abrasion of Glazed Tiles Class I to V (Applicable for floor applications only)	IS 13630 Part 11	Min II	Class V ☺
Linear Thermal Expansion Co-efficient	IS 13630 Part 4	6x10 ⁻⁶ , Max	6x10 ⁻⁶ , Max
Thermal Shock Resistance	IS 13630 Part 5	10 Cycles, Min	Passed
Impact Resistance	IS 13630 Part 14	0.55, Min	0.75
Coefficient of Friction	ISO 10545 Part 17	Manufacturer to declare value where required	R-11 in Pendulum test method
Frost Resistance	IS 13630 Part 10	Required if agreed between manufacturer and purchaser	50 Cycle Passed
Resistance to deep abrasion of unglazed tiles	IS 13630 Part 12	140, Max	Class AA
Bulk Density g/cc	IS 13630 Part 2	2.2, Min	2.2, Min
Chemical Properties			
Resistance to Staining of Glazed Tiles	IS 13630 Part 8	Class 1 Min	Class 1
Resistance to Household Chemicals		Class AA	Class AA
Resistance to Acids and Alkalis (with exception of hydrofluoric acid and its compounds)		Class AA	Class AA

TECHNICAL SPECIFICATIONS

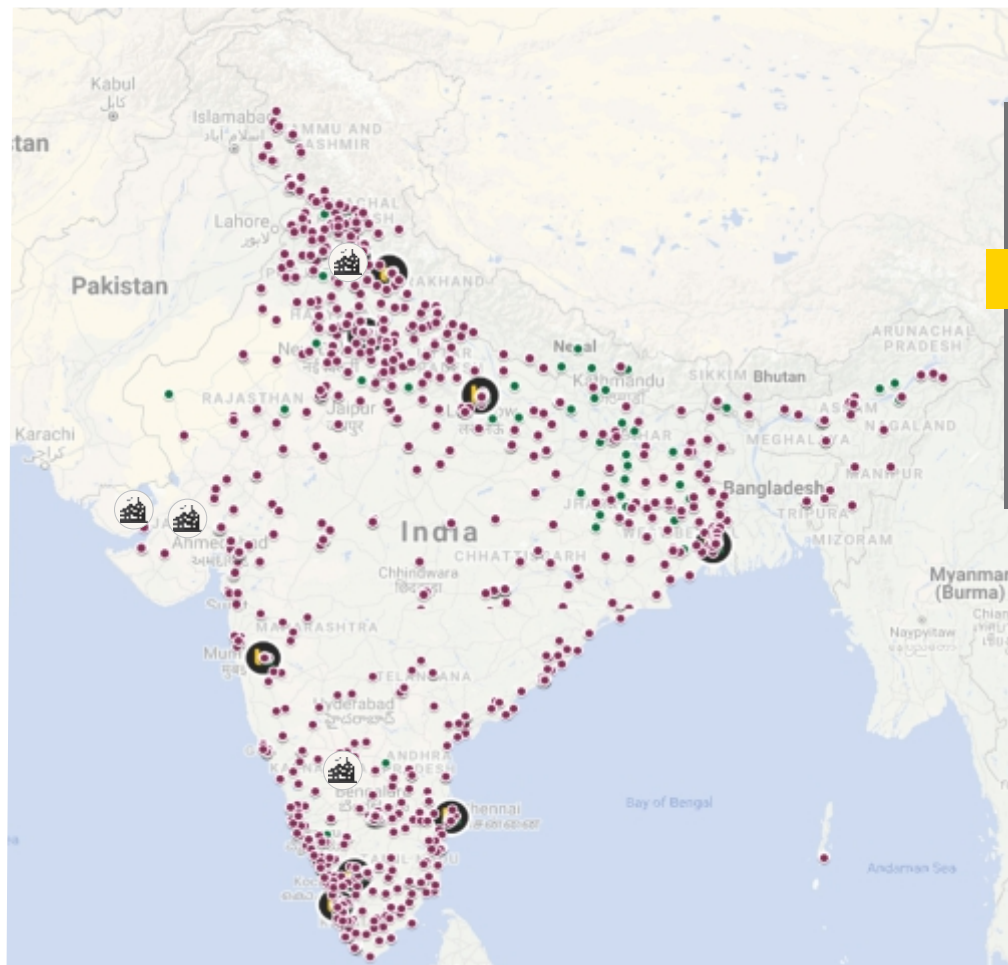
Forever Tiles

Packing Details			
Size	No. of Tiles	Covered Area Per Carton	
(In mm.)	Per Carton	(In Sq. Mtr.)	(In Sq. Ft.)
600x600 (Dora)	4	1.44	15.5





Characteristics	Standard as Per IS 15622:2017 Group B Ib	OBL Norms	Testing Methods
Dimension & Surface Quality			
Deviation in Length & Width	± 0.1 %	±0.05%	IS 13630 Part 1
Deviation in Thickness	± 5.0 %	±3.0%	
Straightness of Sides	± 0.1 %	±0.1%	
Rectangularity	± 0.1 %	±0.1%	
Surface Flatness	± 0.5 %	± 0.2 %	
Surface Quality	Min 95% of the tiles shall be free from visible defects that would impair the appearance of a major area of the tile	Conforms	
Physical Properties			
Water Absorption %	Avg 0.08 < E ≤ 3.0% , Individual 3.30% Max	Less than 3 %	IS 13630 Part 2
Modulus of Rupture in N/mm ²	Avg 30, Individual 27 Min	Min 33 N	IS 13630 Part 6
Breaking Strength N	700 Min for thickness < 7.5mm, 1100 Min for thickness ≥ 7.5 mm	1200 N Min	
Moisture Expansion	0.02, Max	0.02 Max	IS 13630 Part 3
Scratch Hardness (Moh's Scale)	5, Min	7	IS 13630 Part 13
Resistance to Surface Abrasion of glazed tiles Class I to V (Applicable for floor applications only)	Class II, Min	Class V	IS 13630 Part 11
Linear thermal expansion Co-efficient	6x10 ⁻⁶ , Max	Conforms	IS 13630 Part 4
Thermal Shock Resistance	10 Cycles, Min	Passed	IS 13630 Part 5
Crazing Resistance	4 Cycles at 7.5 Bar, Min	Passed	IS 13630 Part 9
Impact Resistance	0.55, Min	0.6	IS 13630 Part 14
Frost Resistance	Required if agreed to between manufacturer and purchaser	Resistant	IS 13630 Part 10
Bulk density g/cc	2.0, Min	2.0, Min	IS 13630 Part 2
Chemical Properties			
Stain Resistance Glazed tiles	Class I, Min	Class -1	IS 13630 Part 8
Resistance to household chemicals	Class AA, Min	Class AA	
Resistance to acids and alkalis	Class AA, Min	Class AA	

NOTE: Certain amount of Size and Shade Variation is inherent in all ceramic products. Within the limits of printed material, the colors and aesthetics of the products correspond closely to those of illustrated products. Prospective customers are advised to inspect a sample of the tile before ordering and laying. At all points of time, the company liability is restricted to the purchase value of tiles.

Every effort has been made to ensure the accuracy of the information given. However, the company reserves the right to delete & change, any of the items, colors, sizes & technical specifications without any prior notice.



A Network of
2500+
 Channel Partners

-  Franchise Owned Boutiques
-  Channel Partners
-  Company Owned Boutiques
-  Plants

ORIENT BELL TILE BOUTIQUE

CHANDIGARH

SCO - 6, First Floor, Sector 7-C, Madhya Marg, Chandigarh-160 019,
 Tel.: +91 172 4624 342

CHENNAI

New No: 85, Old No: 30, Maharaja Tower, 2nd Floor, 1st Avenue,
 Ashok Nagar, (Above Kotak Mahindra Bank), Chennai-600 083,
 Tel.: +91 44 4213 8687

COCHIN

"SURYA GAYATRI", Building No. 32/8, B3, Puthiya Road, New Junction,
 (Opposite Holiday Inn Hotel) Ernakulam By Pass Road, Cochin-682 031
 Tel.: +91 97457 68058

COIMBATORE

11, 1st Floor, Venkata Samy Road (East), R.S. Puram,
 Coimbatore-641 002,
 Tel.: +91 89799 41666

DEHRADUN

Duggal Complex (Near Kamla Palace Hotel), GMS Road,
 Dehradun-248 001,
 Tel.: +91 97197 01064

KOLKATA

8/1, Burdwan Road, Alipore, Kolkata-700 027,
 Tel.: +91 33 4068 4046/7

LUCKNOW

Raj Rani Apartment, Ground Floor, Near Beej Nigam, Badshah Nagar Railway
 Station, Lucknow-226 006,
 Tel.: +91 99847 86404

NEW DELHI

M-47, GK-II, M Block, New Delhi-110 048,
 Tel.: +91 11 4068 7468/69

PUNE

Shop No. 3 and 4, A Tower Vega Centre, C.T.S No. 710, Final Plot No. 401/1,
 Shankarasheth Road, Gultekdi, Swargate, Pune-411 037
 Tel.: +91 73910 72247

VADODRA DISPLAY CENTRE

78-79, 2nd Floor, Surya Kiran Complex, Beside Banker Heart Institute,
 Old Padra Road, Vadodara-390007, Gujarat
 Tel.: +91 98254 14113



Making Tile Selection Easier



Find tiles similar to a reference image



Try floor tiles selected by you in your room



Visualise selected tiles & get a quote



Share layout for a personalised render*

www.orientbell.com

CORPORATE OFFICE:

Iris House, 16 Business Centre,
Nangal Raya, New Delhi-110046, India
Tel: +91-11-47119100, Fax: +91 -11-2852 1273

REGISTERED OFFICE:

8 Industrial Area, Sikandrabad-203 205 (UP), India
Tel: +91-5735-222-203 / 24, +91-8191004575/ 76
Fax: +91 -5735 222 642

CUSTOMER CARE:

customercare@orientbell.com
Missed Call : 87507 11111
Whatsapp : 87507 33333

CIN: L14101UP1977PLC021546

Please join us on social media

