



**b orientbell**  
tiles

**GROUNDING  
STATIC  
CHARGE  
◀24/7▶**

**ANTI-STATIC  
TILES**

600x600 mm



I N T R O D U C I N G

## ANTI-STATIC TILES

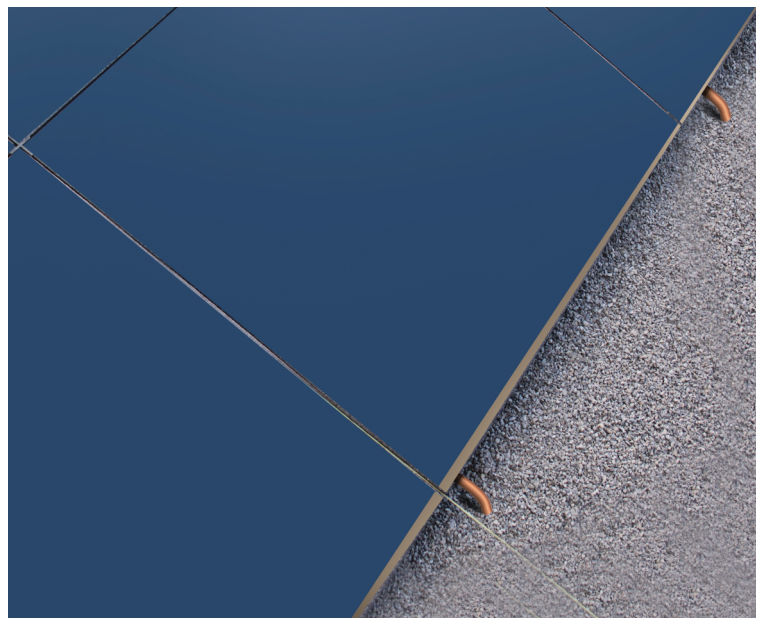


**Antic-Static Conductive Blue DK**

Orientbell Tiles is proud to introduce the Anti-static range of vitrified tiles that drastically reduce the generation of static electricity, ensuring safe and reliable floors. This is ideal for environments where build-up of static electricity is a possibility

### HOW DOES AN ANTI-STATIC TILE ENSURE SURFACE CONDUCTIVITY?

- Ensures that the surface electrical conductivity is below  $10^6$  Ohm/sqm for static conductive requirements.
- Specially designed surface charge collector at all the edges of the tile.
- The conductive grout collects the static charge from all the four sides & transfer it to the earth via ground earthing connectors.



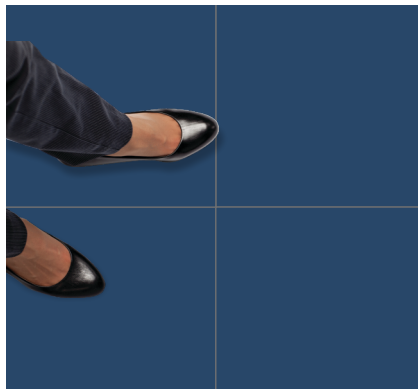
# PROPERTIES

## ① DARK BLUE COLOR



After Firing Cocktail of 4 metals at 1200°C, the dark blue colour of the tiles appears

## ② MATT FINISH



Orientbell Anti-Static tiles are made in Matt Finish which ensures less accumulation of dirt and there by reduces the chance of friction that causes static charge. Easy to clean and maintain, satin finish gives a clean and neat look to your spaces.

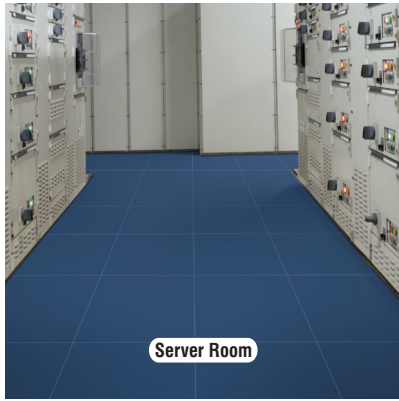
## ③ IISC CERTIFICATION



OBL Anti-Static tiles has been certified by India's Most Reputed **IISc Bangalore**, which is one among the World's Top 100 Universities.



# ANTI-STATIC CONDUCTIVE TILE Surface Resistance ( $10^3$ to $10^6$ ohm/sq)

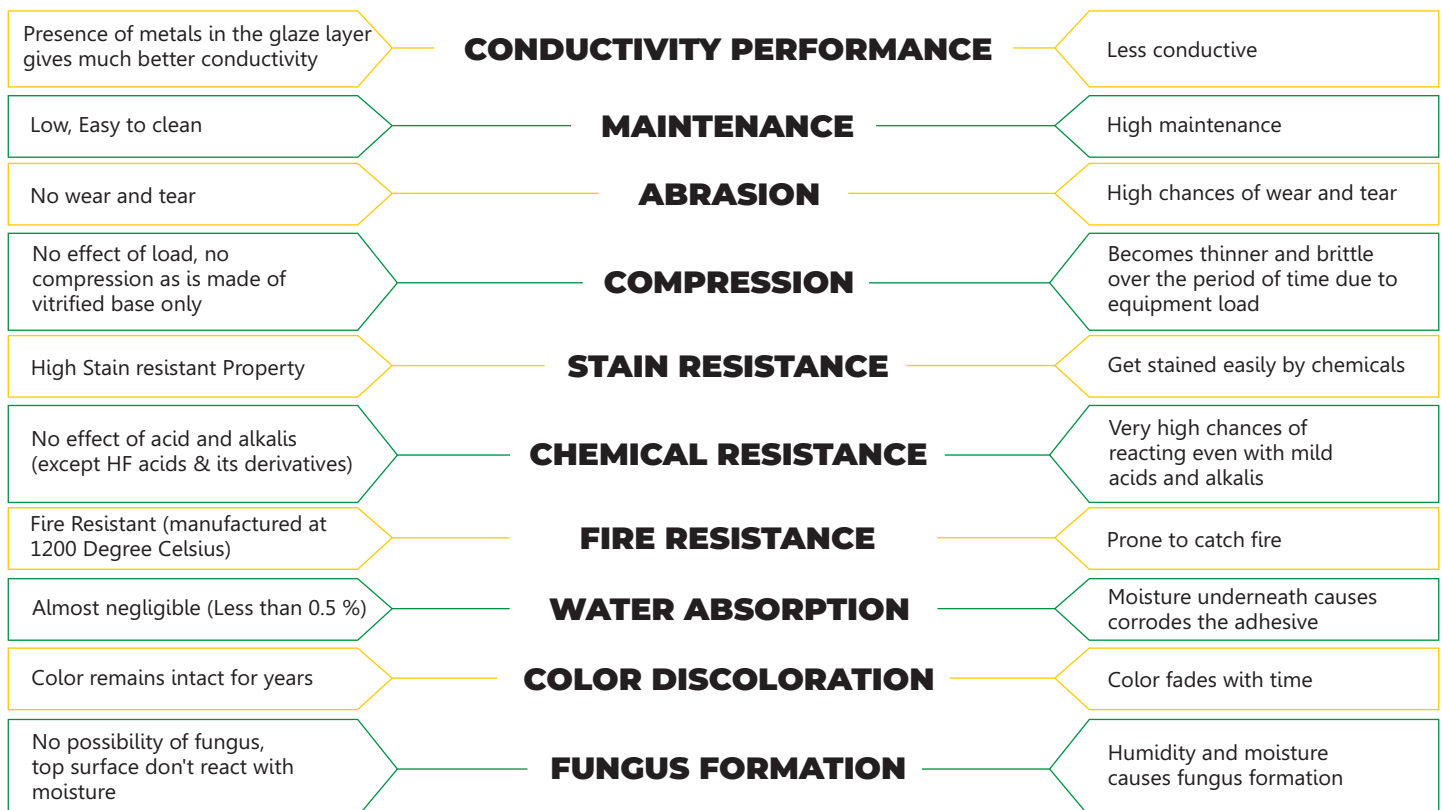


## MAJOR APPLICATIONS AREA:

- Data Centre
- Server Room
- MRI Room
- Medical Labs
- Petro Chemical Factories
- Operations Theatre
- Ordinance Factories
- PCB Manufacturing
- PLC Panel Rooms
- Shell Making Factories
- Pharma Industry
- Defense Factories
- IT Industry
- Chemical Plants
- Mobile/TV Assembly Units

## COMPARISON

### Anti-Static Tiles Vs Vinyl / Epoxy Anti-Static Flooring





# TECHNICAL SPECIFICATIONS

## Anti-Static Tiles

Packing Details			
Size	No. of Tiles	Covered Area Per Carton	
( In mm. )	Per Carton	( In Sq. Mtr. )	( In Sq. Ft. )
600x600	4	1.44	15.5

Characteristics	Testing Methods	Requirement as per IS 15622:2017 0.08<E≤3 (Group B Ib)		OBL Norms
		Unrectified	Rectified	
<b>Dimension &amp; Surface Quality</b>				
Deviation in Length & Width	IS 13630 Part 1	±0.4%	± 0.1 %	±0.1%
Deviation in Thickness		± 5.0 %		±4.0%
Straightness of Sides		± 0.3 %	± 0.1 %	±0.1%
Rectangularity		± 0.3 %	± 0.1 %	±0.1%
Surface Flatness		± 0.5 %		± 0.2 %
Surface Quality		Min 95% of the tiles shall be free from visible defects that would impair the appearance of a major area of the tile		Conforms
<b>Physical Properties</b>				
Water Absorption %	IS 13630 Part 2	Avg 0.08 < E ≤ 3 % , Individual 3.3 % Max		Avg <0.5 %
Modulus of Rupture in N/mm <sup>2</sup>	IS 13630 Part 6	Avg 30, Individual 27, Min		Min 38 N/mm <sup>2</sup>
Breaking Strength (N)		700 Min for thickness < 7.5mm, 1100 Min for thickness ≥ 7.5 mm		Min 1500 N
Moisture Expansion	IS 13630 Part 3	0.02, Max		Conforms
Scratch Hardness (Moh's Scale)	IS 13630 Part 13	5, Min		Min 5
Resistance to Surface Abrasion of glazed tiles Class I to V (Applicable for floor applications only)	IS 13630 Part 11	Class II, Min		Class III to IV (Depending on surface)
Linear thermal expansion Co-efficient	IS 13630 Part 4	7x10 <sup>-6</sup> , Max		Conforms
Thermal Shock Resistance	IS 13630 Part 5	10 Cycles, Min		Passed
Crazing Resistance	IS 13630 Part 9	4 Cycles at 7.5 Bar, Min		4 Cycles at 7.5 Bar
Impact Resistance	IS 13630 Part 14	0.55, Min		Min, 0.7
Skid Resistance	DIN 51130	Manufacturer to declare value where required		>R9
Frost Resistance	IS 13630 Part 10	Required if agreed to between manufacturer and purchaser		Resistant
Bulk density g/cc	IS 13630 Part 2	2.0, Min		2.1, Min
Surface Electrical Resistance	ANSI/ESD S7.1	10 <sup>3</sup> ohm/ square to 10 <sup>6</sup> ohm/ square (Conductive)		0.1 x 10 <sup>6</sup> ohm/square
		10 <sup>6</sup> ohm/ square to 10 <sup>9</sup> ohm/ square (Dissipative)		10 <sup>6</sup> to 10 <sup>8</sup> ohm/square
<b>Chemical Properties</b>				
Resistance to staining of glazed tiles	IS 13630 Part 8	Class I, Min		Min Class 1
Resistance to household chemicals		Class AA, Min		Min Class AA
Resistance to acids and alkalis (Except HF)		Require If Agreed		Min Class AA

NOTE: Certain amount of Size and Shade Variation is inherent in all ceramic products. Within the limits of printed material, the colors and aesthetics of the products correspond closely to those of illustrated products. Prospective customers are advised to inspect a sample of the tile before ordering and laying. At all points of time, the company liability is restricted to the purchase value of tiles.

Every effort has been made to ensure the accuracy of the information given. However, the company reserves the right to delete & change, any of the items, colors, sizes & technical specifications without any prior notice.





Making Tile Selection Easier



Find tiles similar to a reference image



Tiles selected by you in your room



Visualise selected tiles & get a quote



Share layout for a personalised render\*

[www.orientbell.com](http://www.orientbell.com)

**CORPORATE OFFICE:**

Iris House, 16 Business Centre,  
Nangal Raya, New Delhi-110046, India  
Tel: +91-11-47119100, Fax: +91 -11-2852 1273

**REGISTERED OFFICE:**

8 Industrial Area, Sikandrabad-203 205 (UP), India  
Tel: +91-5735-222-203 / 24, +91-8191004575/ 76  
Fax: +91 -5735 222 642

**CUSTOMER CARE:**

[customercare@orientbell.com](mailto:customercare@orientbell.com)  
Missed Call : 87507 11111  
Whatsapp : 87507 33333

CIN: L14101UP1977PLC021546

Please join us on social media

